

Product Name: Galectin-8 Rabbit Polyclonal Antibody
Catalog #: APRab11276



Summary

Production Name	Galectin-8 Rabbit Polyclonal Antibody
Description	Rabbit Polyclonal Antibody
Host	Rabbit
Application	WB,IHC-P,IF-P,IF-F,ICC/IF,ELISA
Reactivity	Human,Mouse

Performance

Conjugation	Unconjugated
Modification	Unmodified
Isotype	IgG
Clonality	Polyclonal
Form	Liquid
Storage	Store at 4°C short term. Aliquot and store at -20°C long term. Avoid freeze/thaw cycles.
Buffer	Liquid in PBS containing 50% glycerol, 0.5% BSA and 0.02% New type preservative N.
Purification	Affinity purification

Immunogen

Gene Name	LGALS8
Alternative Names	LGALS8; Galectin-8; Gal-8; Po66 carbohydrate-binding protein; Po66-CBP; Prostate carcinoma tumor antigen 1; PCTA-1
Gene ID	3964.0
SwissProt ID	O00214.The antiserum was produced against synthesized peptide derived from human LEG8. AA range:61-110

Application

Dilution Ratio	WB 1:500-1:2000, IHC-P 1:100-300, ELISA 1:20000, IF-P/IF-F/ICC/IF 1:100-300, Not yet tested in other applications.
Molecular Weight	36kDa

Product Name: Galectin-8 Rabbit Polyclonal Antibody
Catalog #: APRab11276

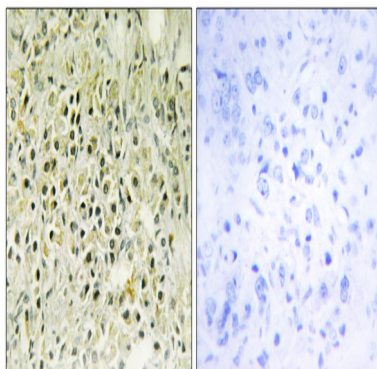


Background

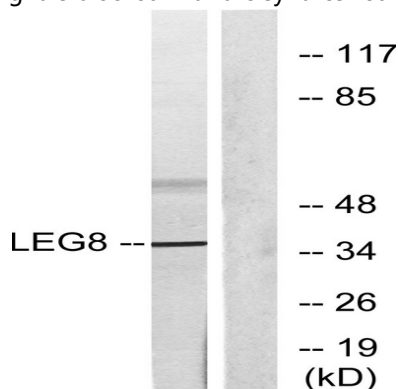
This gene encodes a member of the galectin family. Galectins are beta-galactoside-binding animal lectins with conserved carbohydrate recognition domains. The galectins have been implicated in many essential functions including development, differentiation, cell-cell adhesion, cell-matrix interaction, growth regulation, apoptosis, and RNA splicing. This gene is widely expressed in tumoral tissues and seems to be involved in integrin-like cell interactions. Alternatively spliced transcript variants encoding different isoforms have been identified. [provided by RefSeq, Jul 2008],domain:Contains two homologous but distinct carbohydrate-binding domains.,online information:Galectin-8 C-terminal CRD,online information:Galectin-8 long isoform,similarity:Contains 2 galectin domains.,tissue specificity:Ubiquitous. Selective expression by prostate carcinomas versus normal prostate and benign prostatic hypertrophy.,

Research Area

Image Data

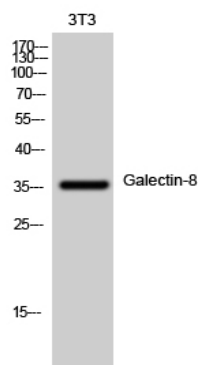


Immunohistochemistry analysis of paraffin-embedded human prostate carcinoma tissue, using LEG8 Antibody. The picture on the right is blocked with the synthesized peptide.



Western blot analysis of lysates from NIH/3T3 cells, using LEG8 Antibody. The lane on the right is blocked with the synthesized peptide.

Product Name: Galectin-8 Rabbit Polyclonal Antibody
Catalog #: APRab11276



Western Blot analysis of 3T3 cells using Galectin-8 Polyclonal Antibody diluted at 1 : 1000

Note

For research use only.