

## Summary

<b>Production Name</b>	FXR2 Rabbit Polyclonal Antibody
<b>Description</b>	Rabbit Polyclonal Antibody
<b>Host</b>	Rabbit
<b>Application</b>	WB,IHC-P,IF-P,IF-F,ICC/IF,ELISA
<b>Reactivity</b>	Human,Mouse

## Performance

<b>Conjugation</b>	Unconjugated
<b>Modification</b>	Unmodified
<b>Isotype</b>	IgG
<b>Clonality</b>	Polyclonal
<b>Form</b>	Liquid
<b>Storage</b>	Store at 4°C short term. Aliquot and store at -20°C long term. Avoid freeze/thaw cycles.
<b>Buffer</b>	Liquid in PBS containing 50% glycerol, 0.5% BSA and 0.02% New type preservative N.
<b>Purification</b>	Affinity purification

## Immunogen

<b>Gene Name</b>	FXR2
<b>Alternative Names</b>	FXR2; FMR1L2; Fragile X mental retardation syndrome-related protein 2
<b>Gene ID</b>	9513.0
<b>SwissProt ID</b>	P51116.The antiserum was produced against synthesized peptide derived from human FXR2. AA range:551-600

## Application

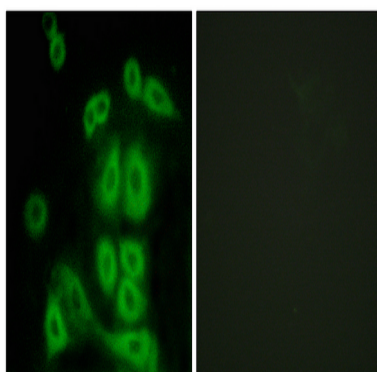
<b>Dilution Ratio</b>	WB 1:500-1:2000, IHC-P 1:100-1:300, IF-P/IF-F/ICC/IF 1:200-1:1000, ELISA 1:10000.Not yet tested in other applications.
<b>Molecular Weight</b>	74kDa

## Background

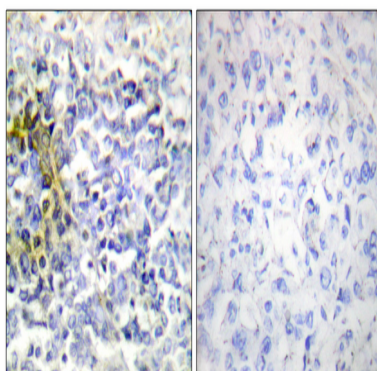
The protein encoded by this gene is a RNA binding protein containing two KH domains and one RCG box, which is similar to FMRP and FXR1. It associates with polyribosomes, predominantly with 60S large ribosomal subunits. This encoded protein may self-associate or interact with FMRP and FXR1. It may have a role in the development of fragile X mental retardation syndrome. [provided by RefSeq, Jul 2008],function:RNA-binding protein.,similarity:Belongs to the FMR1 family.,similarity:Contains 2 KH domains.,subunit:Interacts with FMR1 and FXR1. Interacts with CYFIP2 but not with CYFIP1. Interacts with TDRD3.,

## Research Area

## Image Data

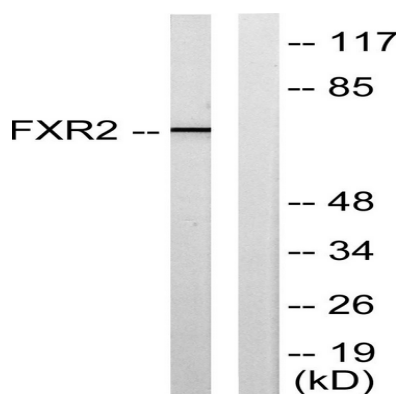


Immunofluorescence analysis of A549 cells, using FXR2 Antibody. The picture on the right is blocked with the synthesized peptide.



Immunohistochemistry analysis of paraffin-embedded human lung carcinoma tissue, using FXR2 Antibody. The picture on the right is blocked with the synthesized peptide.

**Product Name: FXR2 Rabbit Polyclonal Antibody**  
**Catalog #: APRab11197**



Western blot analysis of lysates from COLO205 cells, using FXR2 Antibody. The lane on the right is blocked with the synthesized peptide.

### **Note**

For research use only.