

Summary

Production Name	FSH β Rabbit Polyclonal Antibody
Description	Rabbit Polyclonal Antibody
Host	Rabbit
Application	IHC-P,IF-P,IF-F,ICC/IF,ELISA
Reactivity	Human,Mouse,Rat

Performance

Conjugation	Unconjugated
Modification	Unmodified
Isotype	IgG
Clonality	Polyclonal
Form	Liquid
Storage	Store at 4°C short term. Aliquot and store at -20°C long term. Avoid freeze/thaw cycles.
Buffer	Liquid in PBS containing 50% glycerol, 0.5% BSA and 0.02% New type preservative N.
Purification	Affinity purification

Immunogen

Gene Name	FSHB
Alternative Names	Follitropin subunit beta (Follicle-stimulating hormone beta subunit;FSH-B;FSH-beta;Follitropin beta chain)
Gene ID	2488.0
SwissProt ID	P01225.Synthetic peptide from human protein at AA range: 10-50

Application

Dilution Ratio	IHC-P 1:50-200, ELISA 1:10000-20000, IF-P/IF-F/ICC/IF 1:50-200
Molecular Weight	

Background

Product Name: FSH β Rabbit Polyclonal Antibody
Catalog #: APRab11168

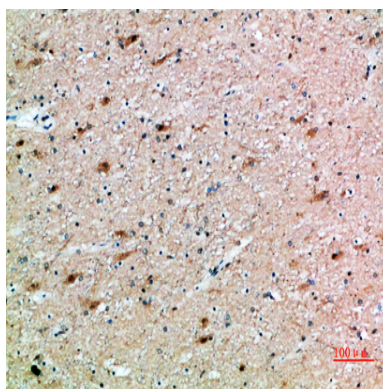


follicle stimulating hormone beta subunit(FSHB) Homo sapiens The pituitary glycoprotein hormone family includes follicle-stimulating hormone, luteinizing hormone, chorionic gonadotropin, and thyroid-stimulating hormone. All of these glycoproteins consist of an identical alpha subunit and a hormone-specific beta subunit. This gene encodes the beta subunit of follicle-stimulating hormone. In conjunction with luteinizing hormone, follicle-stimulating hormone induces egg and sperm production. Alternative splicing results in two transcript variants encoding the same protein. [provided by RefSeq, Jul 2008],disease:Defects in FSHB are a cause of isolated follicle-stimulating hormone deficiency (IFSHD) [MIM:229070]. Selective follicle-stimulating hormone deficiency is an uncommon cause of infertility, producing amenorrhea and hypogonadism in women and oligo or azoospermia with normal testosterone levels in normally virilised men.,function:Stimulates development of follicle and spermatogenesis in the reproductive organs.,online information:Follicle-stimulating hormone entry,online information:The Singapore human mutation and polymorphism database,pharmaceutical:Available under the names Gonal-F or Metrodin HP (Serono) and Puregon (Organon). Used in the treatment of infertility in women with proven hypopituitarism or who have not responded to clomifene; or in superovulation treatment for assisted conception (such as in vitro fertilization). Metrodin HP is also used in the treatment of hypogonadotrophic hypogonadism in men for the stimulation of spermatogenesis.,similarity:Belongs to the glycoprotein hormones subunit beta family.,subunit:Heterodimer of a common alpha chain and a unique beta chain which confers biological specificity to thyrotropin, lutropin, follitropin and gonadotropin.,

Research Area

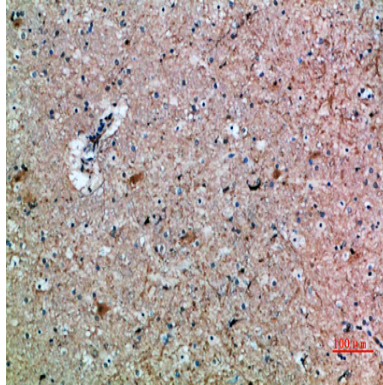
Neuroactive ligand-receptor interaction;GnRH;

Image Data



Immunohistochemical analysis of paraffin-embedded human-brain, antibody was diluted at 1:200

Product Name: FSH β Rabbit Polyclonal Antibody
Catalog #: APRab11168



Immunohistochemical analysis of paraffin-embedded human-brain, antibody was diluted at 1:200

Note

For research use only.