

Product Name: Frizzled-1 Rabbit Polyclonal Antibody
Catalog #: APRab11139



Summary

Production Name	Frizzled-1 Rabbit Polyclonal Antibody
Description	Rabbit Polyclonal Antibody
Host	Rabbit
Application	WB,IF-P,IF-F,ICC/IF,ELISA
Reactivity	Human,Rat,Mouse,,Rice

Performance

Conjugation	Unconjugated
Modification	Unmodified
Isotype	IgG
Clonality	Polyclonal
Form	Liquid
Storage	Store at 4°C short term. Aliquot and store at -20°C long term. Avoid freeze/thaw cycles.
Buffer	Liquid in PBS containing 50% glycerol, 0.5% BSA and 0.02% New type preservative N.
Purification	Affinity purification

Immunogen

Gene Name	FZD1
Alternative Names	FZD1; Frizzled-1; Fz-1; hFz1; FzE1
Gene ID	8321.0
SwissProt ID	Q9UP38.The antiserum was produced against synthesized peptide derived from human FZD1. AA range:15-64

Application

Dilution Ratio	WB 1:500-1:2000, IF-P/IF-F/ICC/IF 1:200-1:1000, ELISA 1:5000.Not yet tested in other applications.
Molecular Weight	71kDa

Product Name: Frizzled-1 Rabbit Polyclonal Antibody
Catalog #: APRab11139



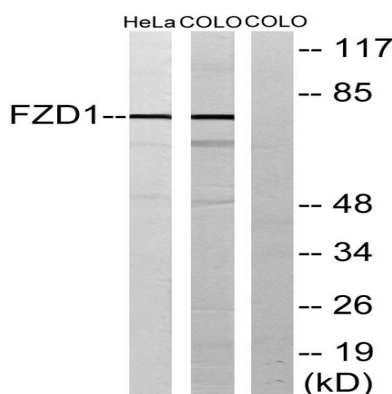
Background

frizzled class receptor 1(FZD1) Homo sapiens Members of the 'frizzled' gene family encode 7-transmembrane domain proteins that are receptors for Wnt signaling proteins. The FZD1 protein contains a signal peptide, a cysteine-rich domain in the N-terminal extracellular region, 7 transmembrane domains, and a C-terminal PDZ domain-binding motif. The FZD1 transcript is expressed in various tissues. [provided by RefSeq, Jul 2008],domain:Lys-Thr-X-X-X-Trp motif is involved in the activation of the Wnt/beta-catenin signaling pathway.,domain:The FZ domain is involved in binding with Wnt ligands.,function:Receptor for Wnt proteins. Most of frizzled receptors are coupled to the beta-catenin canonical signaling pathway, which leads to the activation of disheveled proteins, inhibition of GSK-3 kinase, nuclear accumulation of beta-catenin and activation of Wnt target genes. A second signaling pathway involving PKC and calcium fluxes has been seen for some family members, but it is not yet clear if it represents a distinct pathway or if it can be integrated in the canonical pathway, as PKC seems to be required for Wnt-mediated inactivation of GSK-3 kinase. Both pathways seem to involve interactions with G-proteins. May be involved in transduction and intercellular transmission of polarity information during tissue morphogenesis and/or in differentiated tissues. Activated by Wnt3A, Wnt3, Wnt1 and to a lesser extent Wnt2, but not by Wnt4, Wnt5A, Wnt5B, Wnt6, Wnt7A or Wnt7B.,similarity:Belongs to the G-protein coupled receptor Fz/Smo family.,similarity:Contains 1 FZ (frizzled) domain.,tissue specificity:Expressed in adult heart, placenta, lung, kidney, pancreas, prostate, and ovary and in fetal lung and kidney.,

Research Area

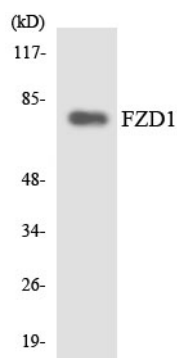
WNT;WNT-T CELLMelanogenesis;Pathways in cancer;Colorectal cancer;Basal cell carcinoma;

Image Data

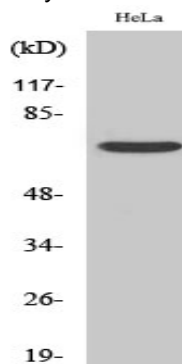


Western blot analysis of lysates from HeLa and COLO205 cells, using FZD1 Antibody. The lane on the right is blocked with the synthesized peptide.

Product Name: Frizzled-1 Rabbit Polyclonal Antibody
Catalog #: APRab11139



Western blot analysis of the lysates from HT-29 cells using FZD1 antibody.



Western Blot analysis of various cells using Frizzled-1 Polyclonal Antibody

Note

For research use only.