

Summary

Production Name	Fractalkine Rabbit Polyclonal Antibody
Description	Rabbit Polyclonal Antibody
Host	Rabbit
Application	WB,IHC-P,IF-P,IF-F,ICC/IF,ELISA
Reactivity	Human,Rat,Mouse

Performance

Conjugation	Unconjugated
Modification	Unmodified
Isotype	IgG
Clonality	Polyclonal
Form	Liquid
Storage	Store at 4°C short term. Aliquot and store at -20°C long term. Avoid freeze/thaw cycles.
Buffer	Liquid in PBS containing 50% glycerol, 0.5% BSA and 0.02% New type preservative N.
Purification	Affinity purification

Immunogen

Gene Name	CX3CL1
Alternative Names	CX3CL1; FKN; NTT; SCYD1; A-152E5.2; Fractalkine; C-X3-C motif chemokine 1; CX3C membrane-anchored chemokine; Neurotactin; Small-inducible cytokine D1
Gene ID	6376.0
SwissProt ID	P78423.The antiserum was produced against synthesized peptide derived from the Internal region of human CX3CL1. AA range:231-280

Application

Dilution Ratio	WB 1:500-1:2000, IHC-P 1:100-1:300, ELISA 1:20000, IF-P/IF-F/ICC/IF 1:50-200
Molecular Weight	42kDa

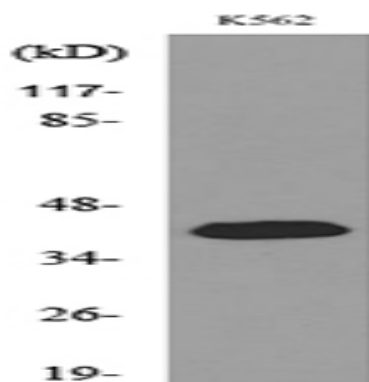
Background

function: The soluble form is chemotactic for T-cells and monocytes, but not for neutrophils. The membrane-bound form promotes adhesion of those leukocytes to endothelial cells. May play a role in regulating leukocyte adhesion and migration processes at the endothelium. Binds to CX3CR1., induction: By TNF and IL-1 in pulmonary endothelial cells and umbilical vein endothelial cells., online information: CX3CL1 entry, PTM: A soluble short 95 kDa form may be released by proteolytic cleavage from the long membrane-anchored form., similarity: Belongs to the intercrine delta family., subunit: Monomer., tissue specificity: Small intestine, colon, testis, prostate, heart, brain, lung, skeletal muscle, kidney and pancreas., function: The soluble form is chemotactic for T-cells and monocytes, but not for neutrophils. The membrane-bound form promotes adhesion of those leukocytes to endothelial cells. May play a role in regulating leukocyte adhesion and migration processes at the endothelium. Binds to CX3CR1., induction: By TNF and IL-1 in pulmonary endothelial cells and umbilical vein endothelial cells., online information: CX3CL1 entry, PTM: A soluble short 95 kDa form may be released by proteolytic cleavage from the long membrane-anchored form., similarity: Belongs to the intercrine delta family., subunit: Monomer., tissue specificity: Small intestine, colon, testis, prostate, heart, brain, lung, skeletal muscle, kidney and pancreas.,

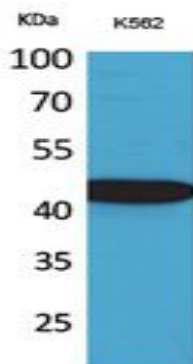
Research Area

Cytokine-cytokine receptor interaction; Chemokine;

Image Data



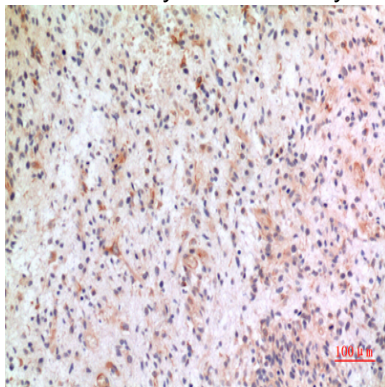
Western blot analysis of lysate from K562 cells, using CX3CL1 Antibody.



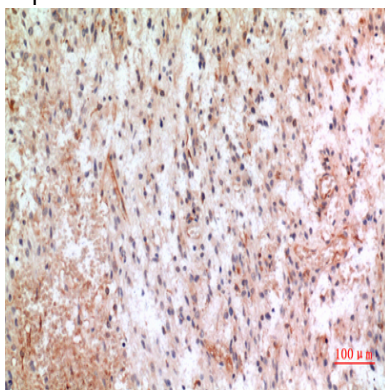
Product Name: Fractalkine Rabbit Polyclonal Antibody
Catalog #: APRab11130



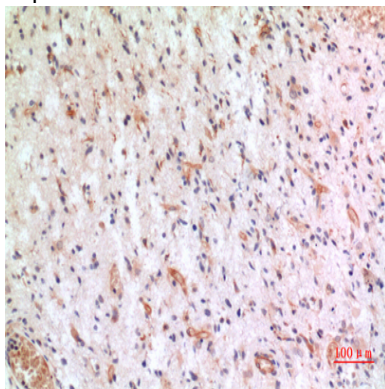
Western Blot analysis of K562 cells using Fractalkine Polyclonal Antibody.. Secondary antibody was diluted at 1:20000



Immunohistochemical analysis of paraffin-embedded human-brain, antibody was diluted at 1:100



Immunohistochemical analysis of paraffin-embedded human-brain, antibody was diluted at 1:100



Immunohistochemical analysis of paraffin-embedded human-brain, antibody was diluted at 1:100

Note

For research use only.