

Summary

Production Name	FPRL2 Rabbit Polyclonal Antibody
Description	Rabbit Polyclonal Antibody
Host	Rabbit
Application	IF-P,IF-F,ICC/IF,ELISA
Reactivity	Human,Rat,Mouse

Performance

Conjugation	Unconjugated
Modification	Unmodified
Isotype	IgG
Clonality	Polyclonal
Form	Liquid
Storage	Store at 4°C short term. Aliquot and store at -20°C long term. Avoid freeze/thaw cycles.
Buffer	Liquid in PBS containing 50% glycerol, 0.5% BSA and 0.02% New type preservative N.
Purification	Affinity purification

Immunogen

Gene Name	FPR3
Alternative Names	FPR3; FPRH1; FPRL2; N-formyl peptide receptor 3; FMLP-related receptor II; FMLP-R-II; Formyl peptide receptor-like 2
Gene ID	2359.0
SwissProt ID	P25089. The antiserum was produced against synthesized peptide derived from human FPRL2. AA range:304-353

Application

Dilution Ratio	IF-P/IF-F/ICC/IF 1:200-1:1000, ELISA 1:40000. Not yet tested in other applications.
Molecular Weight	

Background

Product Name: FPRL2 Rabbit Polyclonal Antibody
Catalog #: APRab11125

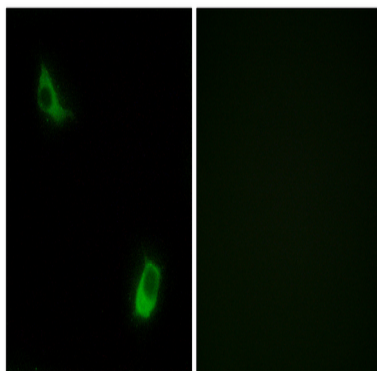


function:Low affinity receptor for N-formyl-methionyl peptides, which are powerful neutrophils chemotactic factors. Binding of FMLP to the receptor causes activation of neutrophils. This response is mediated via a G-protein that activates a phosphatidylinositol-calcium second messenger system.,similarity:Belongs to the G-protein coupled receptor 1 family.,function:Low affinity receptor for N-formyl-methionyl peptides, which are powerful neutrophils chemotactic factors. Binding of FMLP to the receptor causes activation of neutrophils. This response is mediated via a G-protein that activates a phosphatidylinositol-calcium second messenger system.,similarity:Belongs to the G-protein coupled receptor 1 family.,

Research Area

Neuroactive ligand-receptor interaction;

Image Data



Immunofluorescence analysis of LOVO cells, using FPRL2 Antibody. The picture on the right is blocked with the synthesized peptide.

Note

For research use only.