

Summary

Production Name	FPR1 Rabbit Polyclonal Antibody
Description	Rabbit Polyclonal Antibody
Host	Rabbit
Application	WB,IHC-P,IF-P,IF-F,ICC/IF,ELISA
Reactivity	Human,Rat,Mouse

Performance

Conjugation	Unconjugated
Modification	Unmodified
Isotype	IgG
Clonality	Polyclonal
Form	Liquid
Storage	Store at 4°C short term. Aliquot and store at -20°C long term. Avoid freeze/thaw cycles.
Buffer	Liquid in PBS containing 50% glycerol, 0.5% BSA and 0.02% New type preservative N.
Purification	Affinity purification

Immunogen

Gene Name	FPR1
Alternative Names	FPR1; fMet-Leu-Phe receptor; fMLP receptor; N-formyl peptide receptor; FPR; N-formylpeptide chemoattractant receptor
Gene ID	2357.0
SwissProt ID	P21462.The antiserum was produced against synthesized peptide derived from human FPR1. AA range:155-204

Application

Dilution Ratio	WB 1:500-1:2000, IHC-P 1:100-1:300, IF-P/IF-F/ICC/IF 1:200-1:1000, ELISA 1:5000.Not yet tested in other applications.
Molecular Weight	40kDa

Product Name: FPR1 Rabbit Polyclonal Antibody
Catalog #: APRab11123



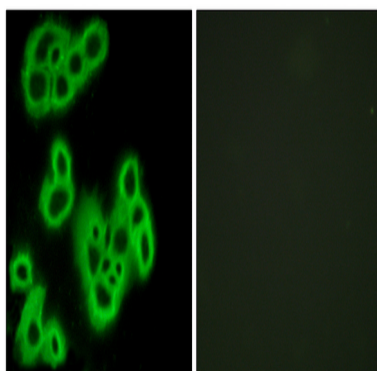
Background

formyl peptide receptor 1(FPR1) Homo sapiens This gene encodes a G protein-coupled receptor of mammalian phagocytic cells that is a member of the G-protein coupled receptor 1 family. The protein mediates the response of phagocytic cells to invasion of the host by microorganisms and is important in host defense and inflammation.[provided by RefSeq, Jul 2010],function:High affinity receptor for N-formyl-methionyl peptides, which are powerful neutrophils chemotactic factors. Binding of FMLP to the receptor causes activation of neutrophils. This response is mediated via a G-protein that activates a phosphatidylinositol-calcium second messenger system.,PTM:Phosphorylated; which is necessary for desensitization.,similarity:Belongs to the G-protein coupled receptor 1 family.,tissue specificity:Neutrophils.,

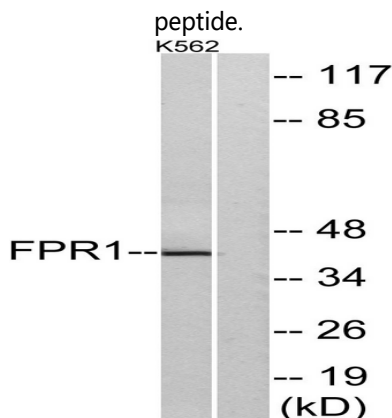
Research Area

Neuroactive ligand-receptor interaction;

Image Data

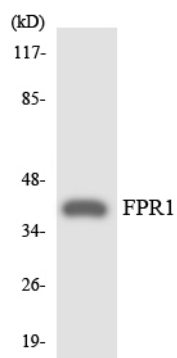


Immunofluorescence analysis of MCF7 cells, using FPR1 Antibody. The picture on the right is blocked with the synthesized



Western blot analysis of lysates from K562 cells, using FPR1 Antibody. The lane on the right is blocked with the synthesized peptide.

Product Name: FPR1 Rabbit Polyclonal Antibody
Catalog #: APRab11123



Western blot analysis of the lysates from COLO205 cells using FPR1 antibody.

Note

For research use only.