

Summary

Production Name	FMIP Rabbit Polyclonal Antibody
Description	Rabbit Polyclonal Antibody
Host	Rabbit
Application	WB,IHC-P,IF-P,IF-F,ICC/IF,ELISA
Reactivity	Human,Mouse,Rat

Performance

Conjugation	Unconjugated
Modification	Unmodified
Isotype	IgG
Clonality	Polyclonal
Form	Liquid
Storage	Store at 4°C short term. Aliquot and store at -20°C long term. Avoid freeze/thaw cycles.
Buffer	Liquid in PBS containing 50% glycerol, 0.5% BSA and 0.02% New type preservative N.
Purification	Affinity purification

Immunogen

Gene Name	THOC5 THOC5; C22orf19; KIAA0983; THO complex subunit 5 homolog; Functional spliceosome-associated protein 79; fSAP79; NF2/meningioma region protein pK1.3; Placental protein 39.2; PP39.2; hTREX90
Alternative Names	
Gene ID	8563.0
SwissProt ID	Q13769. The antiserum was produced against synthesized peptide derived from human THOC5. AA range:561-610

Application

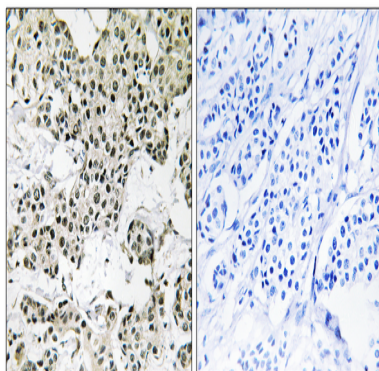
Dilution Ratio	WB 1:500-1:2000, IHC-P 1:100-1:300, ELISA 1:20000, IF-P/IF-F/ICC/IF 1:50-200
Molecular Weight	78kDa

Background

function: May be involved in the differentiation of granulocytes and adipocytes., PTM: Phosphorylated on tyrosine upon binding to activated CSF1R; which causes a dissociation of the two proteins. Phosphorylation on Ser-5 and/or Ser-6 is required for nuclear export. Phosphorylated on Thr-328 in insulin-stimulated adipocytes (By similarity). Phosphorylated upon DNA damage, probably by ATM or ATR., similarity: Belongs to the THOC5 family., subcellular location: Shuttles between nucleus and cytoplasm., subunit: Interacts with phosphorylated CSF1R., tissue specificity: Ubiquitously expressed., function: May be involved in the differentiation of granulocytes and adipocytes., PTM: Phosphorylated on tyrosine upon binding to activated CSF1R; which causes a dissociation of the two proteins. Phosphorylation on Ser-5 and/or Ser-6 is required for nuclear export. Phosphorylated on Thr-328 in insulin-stimulated adipocytes (By similarity). Phosphorylated upon DNA damage, probably by ATM or ATR., similarity: Belongs to the THOC5 family., subcellular location: Shuttles between nucleus and cytoplasm., subunit: Interacts with phosphorylated CSF1R., tissue specificity: Ubiquitously expressed.,

Research Area

Image Data



Immunohistochemistry analysis of paraffin-embedded human breast carcinoma tissue, using THOC5 Antibody. The picture on the right is blocked with the synthesized peptide.

Note

For research use only.