

Summary

Production Name	Flt3 Rabbit Polyclonal Antibody
Description	Rabbit Polyclonal Antibody
Host	Rabbit
Application	WB,IHC-P,IF-P,IF-F,ICC/IF,ELISA
Reactivity	Human,Rat,Mouse

Performance

Conjugation	Unconjugated
Modification	Unmodified
Isotype	IgG
Clonality	Polyclonal
Form	Liquid
Storage	Store at 4°C short term. Aliquot and store at -20°C long term. Avoid freeze/thaw cycles.
Buffer	Liquid in PBS containing 50% glycerol, 0.5% BSA and 0.02% New type preservative N.
Purification	Affinity purification

Immunogen

Gene Name	FLT3 FLT3; CD135; FLK2; STK1; Receptor-type tyrosine-protein kinase FLT3; FL cytokine receptor; Fetal liver kinase-2; FLK-2; Fms-like tyrosine kinase 3; FLT-3; Stem cell tyrosine kinase 1; STK-1; CD antigen CD135
Alternative Names	
Gene ID	2322.0
SwissProt ID	P36888.The antiserum was produced against synthesized peptide derived from human FLT3. AA range:565-614

Application

Dilution Ratio	WB 1:500-1:2000, IHC-P 1:100-1:300, ELISA 1:5000, IF-P/IF-F/ICC/IF 1:50-200
Molecular Weight	117kDa

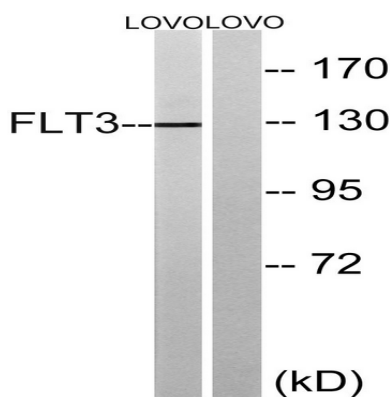
Background

This gene encodes a class III receptor tyrosine kinase that regulates hematopoiesis. This receptor is activated by binding of the fms-related tyrosine kinase 3 ligand to the extracellular domain, which induces homodimer formation in the plasma membrane leading to autophosphorylation of the receptor. The activated receptor kinase subsequently phosphorylates and activates multiple cytoplasmic effector molecules in pathways involved in apoptosis, proliferation, and differentiation of hematopoietic cells in bone marrow. Mutations that result in the constitutive activation of this receptor result in acute myeloid leukemia and acute lymphoblastic leukemia. [provided by RefSeq, Jan 2015], catalytic activity: ATP + a [protein]-L-tyrosine = ADP + a [protein]-L-tyrosine phosphate, function: Receptor for the FL cytokine. Has a tyrosine-protein kinase activity, similarity: Belongs to the protein kinase superfamily. Tyr protein kinase family, similarity: Belongs to the protein kinase superfamily. Tyr protein kinase family. CSF-1/PDGF receptor subfamily, similarity: Contains 1 Ig-like C2-type (immunoglobulin-like) domain, similarity: Contains 1 protein kinase domain, subunit: Interacts with FLZ1 following ligand activation, tissue specificity: Bone marrow cells,

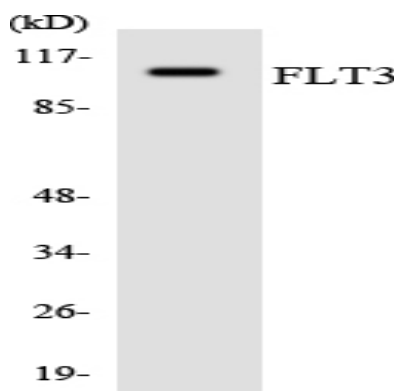
Research Area

Cytokine-cytokine receptor interaction; Hematopoietic cell lineage; Pathways in cancer; Acute myeloid leukemia;

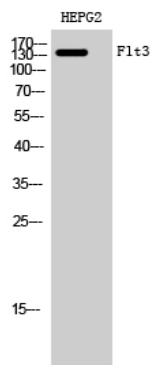
Image Data



Product Name: Flt3 Rabbit Polyclonal Antibody
Catalog #: APRab11036



Western blot analysis of the lysates from K562 cells using FLT3 antibody.



Western Blot analysis of HEPG2 cells using Flt3 Polyclonal Antibody diluted at 1: 1000

Note

For research use only.