

Product Name: Fliz1 Rabbit Polyclonal Antibody
Catalog #: APRab11022

Summary

Production Name	Fliz1 Rabbit Polyclonal Antibody
Description	Rabbit Polyclonal Antibody
Host	Rabbit
Application	WB,IHC-P,IF-P,IF-F,ICC/IF,ELISA
Reactivity	Human,Rat,Mouse

Performance

Conjugation	Unconjugated
Modification	Unmodified
Isotype	IgG
Clonality	Polyclonal
Form	Liquid
Storage	Store at 4°C short term. Aliquot and store at -20°C long term. Avoid freeze/thaw cycles.
Buffer	Liquid in PBS containing 50% glycerol, 0.5% BSA and 0.02% New type preservative N.
Purification	Affinity purification

Immunogen

Gene Name	ZC3H8
Alternative Names	ZC3H8; ZC3HDC8; Zinc finger CCCH domain-containing protein 8
Gene ID	84524.0
SwissProt ID	Q8N5P1.The antiserum was produced against synthesized peptide derived from human ZC3H8. AA range:81-130

Application

Dilution Ratio	WB 1:500-1:2000, IHC-P 1:100-1:300, ELISA 1:40000, IF-P/IF-F/ICC/IF 1:50-200
Molecular Weight	40kDa

Background

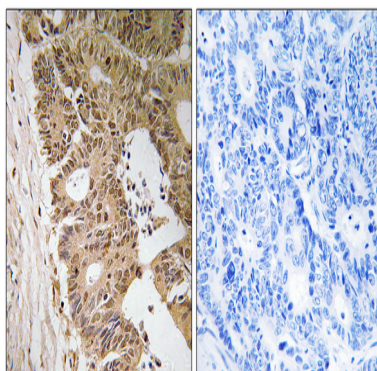
Product Name: Fliz1 Rabbit Polyclonal Antibody
Catalog #: APRab11022



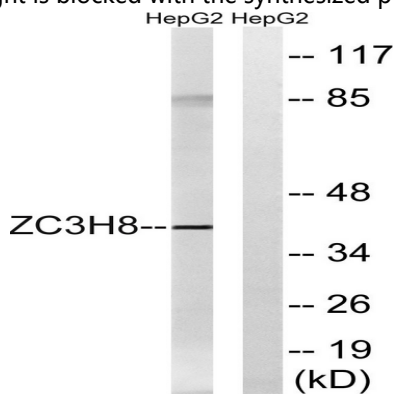
PTM:Phosphorylated upon DNA damage, probably by ATM or ATR.,similarity:Contains 3 C3H1-type zinc fingers.,PTM:Phosphorylated upon DNA damage, probably by ATM or ATR.,similarity:Contains 3 C3H1-type zinc fingers.,

Research Area

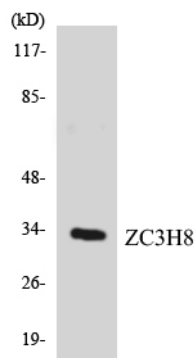
Image Data



Immunohistochemistry analysis of paraffin-embedded human colon carcinoma tissue, using ZC3H8 Antibody. The picture on the right is blocked with the synthesized peptide.



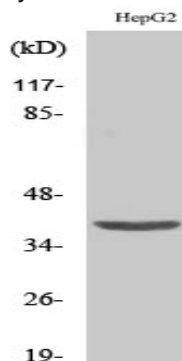
Western blot analysis of lysates from HepG2 cells, using ZC3H8 Antibody. The lane on the right is blocked with the synthesized peptide.



Product Name: Fliz1 Rabbit Polyclonal Antibody
Catalog #: APRab11022



Western blot analysis of the lysates from COLO205 cells using ZC3H8 antibody.



Western Blot analysis of various cells using Fliz1 Polyclonal Antibody cells nucleus extracted by Minute TM Cytoplasmic and Nuclear Fractionation kit (SC-003, Inventbiotech, MN, USA) .

Note

For research use only.