

## Summary

<b>Production Name</b>	Fli-1 Rabbit Polyclonal Antibody
<b>Description</b>	Rabbit Polyclonal Antibody
<b>Host</b>	Rabbit
<b>Application</b>	WB,IHC-P,IF-P,IF-F,ICC/IF,ELISA
<b>Reactivity</b>	Human,Mouse

## Performance

<b>Conjugation</b>	Unconjugated
<b>Modification</b>	Unmodified
<b>Isotype</b>	IgG
<b>Clonality</b>	Polyclonal
<b>Form</b>	Liquid
<b>Storage</b>	Store at 4°C short term. Aliquot and store at -20°C long term. Avoid freeze/thaw cycles.
<b>Buffer</b>	Liquid in PBS containing 50% glycerol, 0.5% BSA and 0.02% New type preservative N.
<b>Purification</b>	Affinity purification

## Immunogen

<b>Gene Name</b>	FLI1
<b>Alternative Names</b>	FLI1; Friend leukemia integration 1 transcription factor; Proto-oncogene Fli-1; Transcription factor ERGB
<b>Gene ID</b>	2313.0
<b>SwissProt ID</b>	Q01543.The antiserum was produced against synthesized peptide derived from human FLI1. AA range:291-340

## Application

<b>Dilution Ratio</b>	WB 1:500-1:2000, IHC-P 1:100-1:300, ELISA 1:10000, IF-P/IF-F/ICC/IF 1:50-200
<b>Molecular Weight</b>	50kDa

**Product Name: Fli-1 Rabbit Polyclonal Antibody**  
**Catalog #: AP Rab11020**

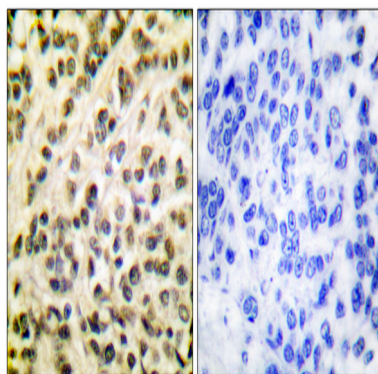


## Background

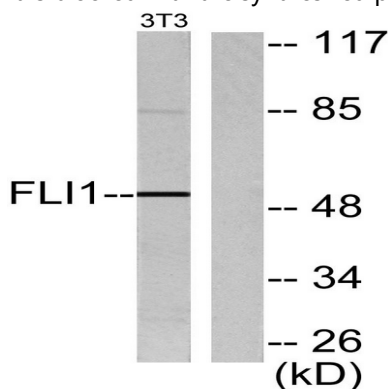
This gene encodes a transcription factor containing an ETS DNA-binding domain. The gene can undergo a t(11;22) (q24;q12) translocation with the Ewing sarcoma gene on chromosome 22, which results in a fusion gene that is present in the majority of Ewing sarcoma cases. An acute lymphoblastic leukemia-associated t(4;11)(q21;q23) translocation involving this gene has also been identified. Alternative splicing results in multiple transcript variants. [provided by RefSeq, Aug 2012], disease: A chromosomal aberration involving FLI1 is a cause of Ewing sarcoma [MIM:133450]. Translocation t(11;22) (q24;q12) with EWS, function: Sequence-specific transcriptional activator. Recognizes the DNA sequence 5'-C[CA]GGAAGT-3', miscellaneous: Located on a fragment of chromosome 11 flanked on the centromeric side by the acute lymphoblastic leukemia-associated t(4;11)(q21;q23) translocation breakpoint and on the telomeric side by the Ewing- and neuroepithelioma-associated t(11;22) (q24;q12) breakpoint, similarity: Belongs to the ETS family, similarity: Contains 1 ETS DNA-binding domain, similarity: Contains 1 PNT (pointed) domain, subunit: Can form homodimers or heterodimers with ETV6/TEL1.

## Research Area

## Image Data



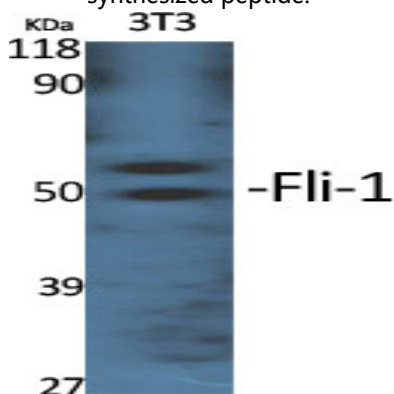
Immunohistochemistry analysis of paraffin-embedded human breast carcinoma tissue, using FLI1 Antibody. The picture on the right is blocked with the synthesized peptide.



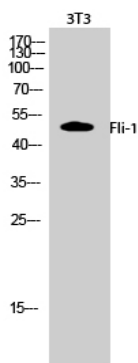
**Product Name: Fli-1 Rabbit Polyclonal Antibody**  
**Catalog #: APRab11020**



Western blot analysis of lysates from NIH/3T3 cells, using FLI1 Antibody. The lane on the right is blocked with the synthesized peptide.



Western Blot analysis of various cells using Fli-1 Polyclonal Antibody cells nucleus extracted by Minute TM Cytoplasmic and Nuclear Fractionation kit (SC-003, Inventbiotech, MN, USA) .



Western Blot analysis of 3T3 cells using Fli-1 Polyclonal Antibody cells nucleus extracted by Minute TM Cytoplasmic and Nuclear Fractionation kit (SC-003, Inventbiotech, MN, USA) .

**Note**

For research use only.