

**Product Name: FGF-13 Rabbit Polyclonal Antibody**  
**Catalog #: APRab10922**



## Summary

<b>Production Name</b>	FGF-13 Rabbit Polyclonal Antibody
<b>Description</b>	Rabbit Polyclonal Antibody
<b>Host</b>	Rabbit
<b>Application</b>	WB,ELISA
<b>Reactivity</b>	Human,Mouse,Rat

## Performance

<b>Conjugation</b>	Unconjugated
<b>Modification</b>	Unmodified
<b>Isotype</b>	IgG
<b>Clonality</b>	Polyclonal
<b>Form</b>	Liquid
<b>Storage</b>	Store at 4°C short term. Aliquot and store at -20°C long term. Avoid freeze/thaw cycles.
<b>Buffer</b>	Liquid in PBS containing 50% glycerol, 0.5% BSA and 0.02% New type preservative N.
<b>Purification</b>	Affinity purification

## Immunogen

<b>Gene Name</b>	FGF13
<b>Alternative Names</b>	FGF13; FHF2; Fibroblast growth factor 13; FGF-13; Fibroblast growth factor homologous factor 2; FHF-2
<b>Gene ID</b>	2258.0
<b>SwissProt ID</b>	Q92913.The antiserum was produced against synthesized peptide derived from human FGF13. AA range:154-203

## Application

<b>Dilution Ratio</b>	WB 1:500-1:2000, ELISA 1:5000.Not yet tested in other applications.
<b>Molecular Weight</b>	28kDa

**Product Name: FGF-13 Rabbit Polyclonal Antibody**  
**Catalog #: APRab10922**



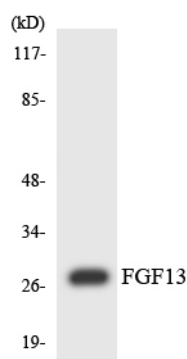
## Background

The protein encoded by this gene is a member of the fibroblast growth factor (FGF) family. FGF family members possess broad mitogenic and cell survival activities, and are involved in a variety of biological processes, including embryonic development, cell growth, morphogenesis, tissue repair, tumor growth, and invasion. This gene is located in a region on chromosome X, which is associated with Borjeson-Forssman-Lehmann syndrome (BFLS), making it a possible candidate gene for familial cases of the BFLS, and for other syndromal and nonspecific forms of X-linked mental retardation mapping to this region. Alternative splicing of this gene at the 5' end results in several transcript variants encoding different isoforms with different N-termini. [provided by RefSeq, Nov 2008],function:Probably involved in nervous system development and function.,similarity:Belongs to the heparin-binding growth factors family.,tissue specificity:Nervous system.,

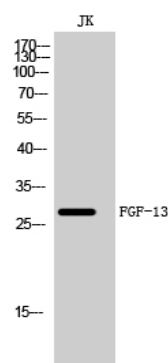
## Research Area

MAPK\_ERK\_Growth;MAPK\_G\_Protein;Regulates Actin and Cytoskeleton;Pathways in cancer;Melanoma;

## Image Data



Western blot analysis of the lysates from Jurkat cells using FGF13 antibody.



Western Blot analysis of JK cells using FGF-13 Polyclonal Antibody diluted at 1: 500

**Product Name: FGF-13 Rabbit Polyclonal Antibody**  
**Catalog #: APRab10922**

---



**Note**

For research use only.