

Summary

| | |
|------------------------|----------------------------------|
| Production Name | Fe65L Rabbit Polyclonal Antibody |
| Description | Rabbit Polyclonal Antibody |
| Host | Rabbit |
| Application | WB,IHC-P,IF-P,IF-F,ICC/IF,ELISA |
| Reactivity | Human,Mouse |

Performance

| | |
|---------------------|--|
| Conjugation | Unconjugated |
| Modification | Unmodified |
| Isotype | IgG |
| Clonality | Polyclonal |
| Form | Liquid |
| Storage | Store at 4°C short term. Aliquot and store at -20°C long term. Avoid freeze/thaw cycles. |
| Buffer | Liquid in PBS containing 50% glycerol, 0.5% BSA and 0.02% New type preservative N. |
| Purification | Affinity purification |

Immunogen

| | |
|--------------------------|--|
| Gene Name | APBB2 |
| Alternative Names | APBB2; FE65L; FE65L1; Amyloid beta A4 precursor protein-binding family B member 2; Protein Fe65-like 1 |
| Gene ID | 323.0 |
| SwissProt ID | Q92870.The antiserum was produced against synthesized peptide derived from human APBB2. AA range:471-520 |

Application

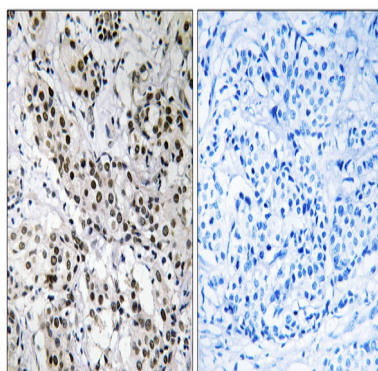
| | |
|-------------------------|--|
| Dilution Ratio | WB 1:500-1:2000, IHC-P 1:100-1:300, ELISA 1:40000, IF-P/IF-F/ICC/IF 1:50-200 |
| Molecular Weight | 83kDa |

Background

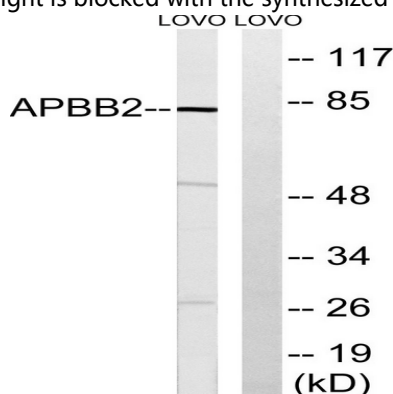
amyloid beta precursor protein binding family B member 2 (APBB2) Homo sapiens The protein encoded by this gene interacts with the cytoplasmic domains of amyloid beta (A4) precursor protein and amyloid beta (A4) precursor-like protein 2. This protein contains two phosphotyrosine binding (PTB) domains, which are thought to function in signal transduction. Polymorphisms in this gene have been associated with Alzheimer's disease. Alternative splicing results in multiple transcript variants. [provided by RefSeq, Oct 2009],function:May modulate the internalization of beta-amyloid precursor protein.,similarity:Contains 1 WW domain.,similarity:Contains 2 PID domains.,subunit:Binds to the intracellular domain of the beta-amyloid precursor protein.,

Research Area

Image Data

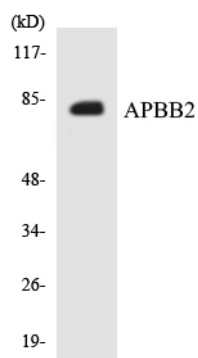


Immunohistochemistry analysis of paraffin-embedded human breast carcinoma tissue, using APBB2 Antibody. The picture on the right is blocked with the synthesized peptide.



Western blot analysis of lysates from LOVO cells, using APBB2 Antibody. The lane on the right is blocked with the synthesized peptide.

Product Name: Fe65L Rabbit Polyclonal Antibody
Catalog #: APRab10899



Western blot analysis of the lysates from HepG2 cells using APBB2 antibody.

Note

For research use only.