

Product Name: FBF1 Rabbit Polyclonal Antibody
Catalog #: APRab10853



Summary

Production Name	FBF1 Rabbit Polyclonal Antibody
Description	Rabbit Polyclonal Antibody
Host	Rabbit
Application	WB,ELISA
Reactivity	Human,Mouse

Performance

Conjugation	Unconjugated
Modification	Unmodified
Isotype	IgG
Clonality	Polyclonal
Form	Liquid
Storage	Store at 4°C short term. Aliquot and store at -20°C long term. Avoid freeze/thaw cycles.
Buffer	Liquid in PBS containing 50% glycerol, and 0.02% New type preservative N.
Purification	Affinity purification

Immunogen

Gene Name	FBF1 ALB KIAA1863
Alternative Names	
Gene ID	85302.0
SwissProt ID	Q8TES7. Synthesized peptide derived from human protein . at AA range: 730-810

Application

Dilution Ratio	WB 1:500-2000, ELISA 1:5000-20000
Molecular Weight	124kDa

Background

caution:The sequence shown here is derived from an Ensembl automatic analysis pipeline and should be considered as preliminary data.,subunit:May interact with FAS cytoplasmic domain.,caution:The sequence shown here is derived from an

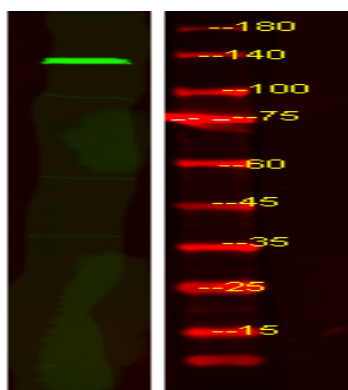
Product Name: FBF1 Rabbit Polyclonal Antibody
Catalog #: APRab10853



Ensembl automatic analysis pipeline and should be considered as preliminary data.,subunit:May interact with FAS cytoplasmic domain.,

Research Area

Image Data



Western Blot analysis of HEK293 lysis, using primary antibody at 1:1000 dilution. Secondary antibody was diluted at 1:10000

Note

For research use only.