

## Summary

<b>Production Name</b>	FAM80B Rabbit Polyclonal Antibody
<b>Description</b>	Rabbit Polyclonal Antibody
<b>Host</b>	Rabbit
<b>Application</b>	WB,ELISA
<b>Reactivity</b>	Human,Mouse,Rat,Monkey

## Performance

<b>Conjugation</b>	Unconjugated
<b>Modification</b>	Unmodified
<b>Isotype</b>	IgG
<b>Clonality</b>	Polyclonal
<b>Form</b>	Liquid
<b>Storage</b>	Store at 4°C short term. Aliquot and store at -20°C long term. Avoid freeze/thaw cycles.
<b>Buffer</b>	Liquid in PBS containing 50% glycerol, 0.5% BSA and 0.02% New type preservative N.
<b>Purification</b>	Affinity purification

## Immunogen

<b>Gene Name</b>	RIMKLB
<b>Alternative Names</b>	RIMKLB; FAM80B; KIAA1238; Beta-citryl-glutamate synthase B; N-acetyl-aspartyl-glutamate synthetase B; NAAG synthetase B; NAAGS; Ribosomal protein S6 modification-like protein B
<b>Gene ID</b>	57494.0
<b>SwissProt ID</b>	Q9ULI2.The antiserum was produced against synthesized peptide derived from human RIMKB. AA range:177-226

## Application

<b>Dilution Ratio</b>	WB 1:500-1:2000, ELISA 1:5000.Not yet tested in other applications.
<b>Molecular Weight</b>	42kDa

**Product Name: FAM80B Rabbit Polyclonal Antibody**  
**Catalog #: APRab10820**

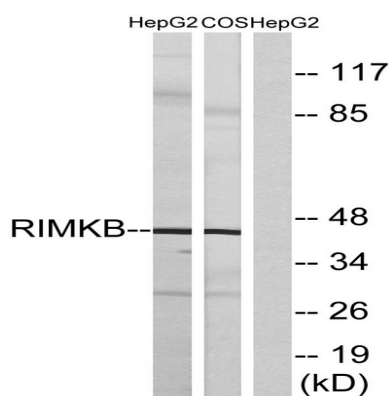


## Background

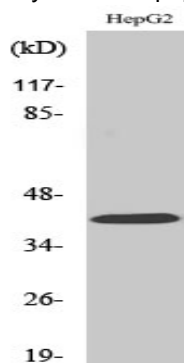
cofactor: Binds 2 manganese ions per subunit., similarity: Belongs to the rimK family., similarity: Contains 1 ATP-grasp domain., cofactor: Binds 2 manganese ions per subunit., similarity: Belongs to the rimK family., similarity: Contains 1 ATP-grasp domain.,

## Research Area

## Image Data



Western blot analysis of lysates from HepG2 and COS cells, using RIMKB Antibody. The lane on the right is blocked with the synthesized peptide.



Western Blot analysis of various cells using FAM80B Polyclonal Antibody diluted at 1: 500

## Note

For research use only.