

## Summary

<b>Production Name</b>	FAM80A Rabbit Polyclonal Antibody
<b>Description</b>	Rabbit Polyclonal Antibody
<b>Host</b>	Rabbit
<b>Application</b>	WB,ELISA
<b>Reactivity</b>	Human,Mouse,Monkey

## Performance

<b>Conjugation</b>	Unconjugated
<b>Modification</b>	Unmodified
<b>Isotype</b>	IgG
<b>Clonality</b>	Polyclonal
<b>Form</b>	Liquid
<b>Storage</b>	Store at 4°C short term. Aliquot and store at -20°C long term. Avoid freeze/thaw cycles.
<b>Buffer</b>	Liquid in PBS containing 50% glycerol, 0.5% BSA and 0.02% New type preservative N.
<b>Purification</b>	Affinity purification

## Immunogen

<b>Gene Name</b>	RIMKLA
<b>Alternative Names</b>	RIMKLA; FAM80A; N-acetylaspartyl-glutamate synthetase A; NAAG synthetase A; NAAGS; Ribosomal protein S6 modification-like protein A
<b>Gene ID</b>	284716.0
<b>SwissProt ID</b>	Q8IXN7.The antiserum was produced against synthesized peptide derived from human RIMKA. AA range:112-161

## Application

<b>Dilution Ratio</b>	WB 1:500-1:2000, ELISA 1:20000.Not yet tested in other applications.
<b>Molecular Weight</b>	43kDa

**Product Name: FAM80A Rabbit Polyclonal Antibody**  
**Catalog #: APRab10819**

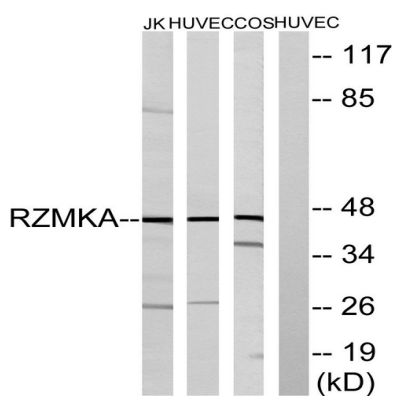


## Background

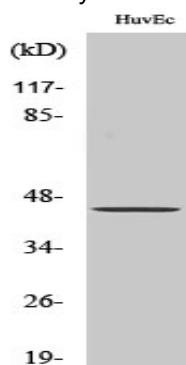
cofactor: Binds 2 manganese ions per subunit., similarity: Belongs to the rimK family., similarity: Contains 1 ATP-grasp domain., cofactor: Binds 2 manganese ions per subunit., similarity: Belongs to the rimK family., similarity: Contains 1 ATP-grasp domain.,

## Research Area

## Image Data



Western blot analysis of lysates from HUVEC, COS, and Jurkat cells, using RIMKA Antibody. The lane on the right is blocked with the synthesized peptide.



Western Blot analysis of various cells using FAM80A Polyclonal Antibody

## Note

For research use only.