

Product Name: FAM35A/B Rabbit Polyclonal Antibody
Catalog #: APRab10810



Summary

Production Name	FAM35A/B Rabbit Polyclonal Antibody
Description	Rabbit Polyclonal Antibody
Host	Rabbit
Application	WB,ELISA
Reactivity	Human,Rat,Mouse

Performance

Conjugation	Unconjugated
Modification	Unmodified
Isotype	IgG
Clonality	Polyclonal
Form	Liquid
Storage	Store at 4°C short term. Aliquot and store at -20°C long term. Avoid freeze/thaw cycles.
Buffer	Liquid in PBS containing 50% glycerol, 0.5% BSA and 0.02% New type preservative N.
Purification	Affinity purification

Immunogen

Gene Name	FAM35A/FAM35B
Alternative Names	FAM35A; Protein FAM35A; FAM35B; Protein FAM35B
Gene ID	54537.0
SwissProt ID	Q86V20/A6NDK8.The antiserum was produced against synthesized peptide derived from human FAM35A/B. AA range:394-443

Application

Dilution Ratio	WB 1:500-1:2000, ELISA 1:10000.Not yet tested in other applications.
Molecular Weight	95kDa

Background

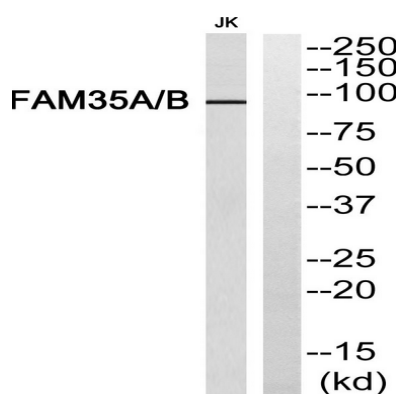
Product Name: FAM35A/B Rabbit Polyclonal Antibody
Catalog #: APRab10810



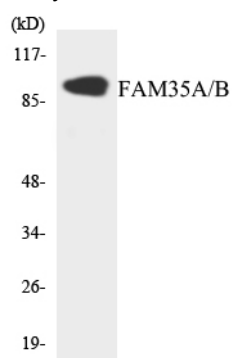
PTM:Phosphorylated upon DNA damage, probably by ATM or ATR.,similarity:Belongs to the FAM35 family.,PTM:Phosphorylated upon DNA damage, probably by ATM or ATR.,similarity:Belongs to the FAM35 family.,

Research Area

Image Data



Western blot analysis of FAM35A/B Antibody. The lane on the right is blocked with the FAM35A/B peptide.



Western blot analysis of the lysates from 293 cells using FAM35A/B antibody.

Note

For research use only.