

Product Name: ER81 Rabbit Polyclonal Antibody
Catalog #: APRab10560



Summary

Production Name	ER81 Rabbit Polyclonal Antibody
Description	Rabbit Polyclonal Antibody
Host	Rabbit
Application	WB,IHC-P,IF-P,IF-F,ICC/IF,ELISA
Reactivity	Human,Mouse

Performance

Conjugation	Unconjugated
Modification	Unmodified
Isotype	IgG
Clonality	Polyclonal
Form	Liquid
Storage	Store at 4°C short term. Aliquot and store at -20°C long term. Avoid freeze/thaw cycles.
Buffer	Liquid in PBS containing 50% glycerol, 0.5% BSA and 0.02% New type preservative N.
Purification	Affinity purification

Immunogen

Gene Name	ETV1
Alternative Names	ETV1; ER81; ETS translocation variant 1; Ets-related protein 81
Gene ID	2115.0
SwissProt ID	P50549.The antiserum was produced against synthesized peptide derived from human ER81. AA range:10-59

Application

Dilution Ratio	WB 1:500-1:2000, IHC-P 1:100-1:300, ELISA 1:10000, IF-P/IF-F/ICC/IF 1:50-200
Molecular Weight	60kDa

Background

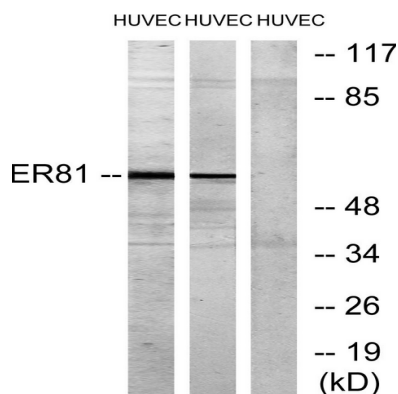
Product Name: ER81 Rabbit Polyclonal Antibody
Catalog #: APRab10560



This gene encodes a member of the ETS (E twenty-six) family of transcription factors. The ETS proteins regulate many target genes that modulate biological processes like cell growth, angiogenesis, migration, proliferation and differentiation. All ETS proteins contain an ETS DNA-binding domain that binds to DNA sequences containing the consensus 5'-CGGA[AT]-3'. The protein encoded by this gene contains a conserved short acidic transactivation domain (TAD) in the N-terminal region, in addition to the ETS DNA-binding domain in the C-terminal region. This gene is involved in chromosomal translocations, which result in multiple fusion proteins including EWS-ETV1 in Ewing sarcoma and at least 10 ETV1 partners (see PMID: 19657377, Table 1) in prostate cancer. In addition to chromosomal rearrangement, this gene is overexpressed in prostate cancer, melanoma and gastrointestinal stromal tumor. Multiple altered disease: A chromosomal aberration involving ETV1 is a cause of Ewing sarcoma [MIM:133450]. Translocation t(7;22)(p22;q12) with EWS, function: Transcriptional activator that binds to DNA sequences containing the consensus pentanucleotide 5'-CGGA[AT]-3'. PTM: Sumoylated. similarity: Belongs to the ETS family. similarity: Contains 1 ETS DNA-binding domain. tissue specificity: Very highly expressed in brain, highly expressed in testis, lung and heart, moderately in spleen, small intestine, pancreas and colon, weakly in liver, prostate and thymus, very weakly in skeletal muscle, kidney and ovary and not in placenta and peripheral blood leukocytes.

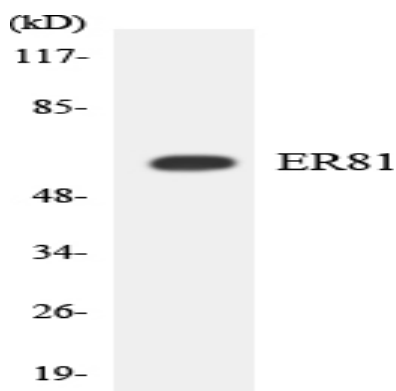
Research Area

Image Data

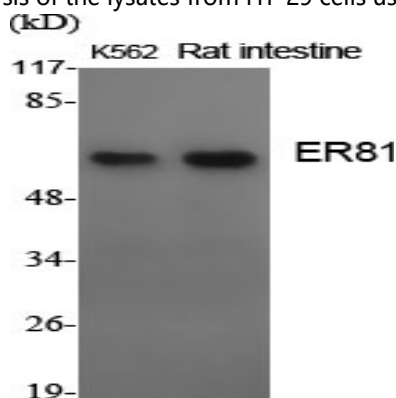


Western blot analysis of lysates from HUVEC cells, treated with PMA 125ng/ml 30', using ER81 Antibody. The lane on the right is blocked with the synthesized peptide.

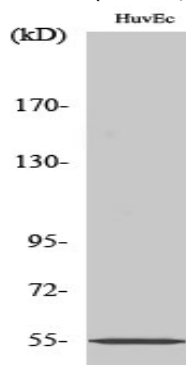
Product Name: ER81 Rabbit Polyclonal Antibody
Catalog #: APRab10560



Western blot analysis of the lysates from HT-29 cells using ER81 antibody.



Western Blot analysis of various cells using ER81 Polyclonal Antibody cells nucleus extracted by Minute TM Cytoplasmic and Nuclear Fractionation kit (SC-003, Inventbiotech, MN, USA) .



Western Blot analysis of HuvEc cells using ER81 Polyclonal Antibody cells nucleus extracted by Minute TM Cytoplasmic and Nuclear Fractionation kit (SC-003, Inventbiotech, MN, USA) .

Note

For research use only.