

## Summary

|                        |                                    |
|------------------------|------------------------------------|
| <b>Production Name</b> | Epsin 3 Rabbit Polyclonal Antibody |
| <b>Description</b>     | Rabbit Polyclonal Antibody         |
| <b>Host</b>            | Rabbit                             |
| <b>Application</b>     | WB,IHC-P,IF-P,IF-F,ICC/IF,ELISA    |
| <b>Reactivity</b>      | Human,Rat,Mouse                    |

## Performance

|                     |  |
|---------------------|--|
| <b>Conjugation</b>  | Unconjugated   |
| <b>Modification</b> | Unmodified   |
| <b>Isotype</b>      | IgG  |
| <b>Clonality</b>    | Polyclonal   |
| <b>Form</b>         | Liquid   |
| <b>Storage</b>      | Store at 4°C short term. Aliquot and store at -20°C long term. Avoid freeze/thaw cycles. |
| <b>Buffer</b>       | Liquid in PBS containing 50% glycerol, 0.5% BSA and 0.02% New type preservative N.       |
| <b>Purification</b> | Affinity purification  |

## Immunogen

|                          |   |
|--------------------------|---|
| <b>Gene Name</b>         | EPN3  |
| <b>Alternative Names</b> | EPN3; Epsin-3; EPS-15-interacting protein 3   |
| <b>Gene ID</b>           | 55040.0   |
| <b>SwissProt ID</b>      | Q9H201.The antiserum was produced against synthesized peptide derived from human EPN3. AA range:401-450 |

## Application

|                         |  |
|-------------------------|--|
| <b>Dilution Ratio</b>   | WB 1:500-1:2000, IHC-P 1:100-1:300, ELISA 1:10000, IF-P/IF-F/ICC/IF 1:50-200 |
| <b>Molecular Weight</b> | 68kDa  |

## Background

**Product Name: Epsin 3 Rabbit Polyclonal Antibody**  
**Catalog #: APRab10556**

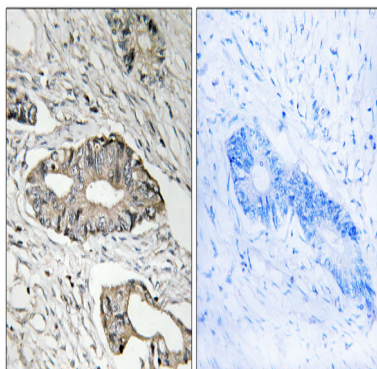


induction:In keratinocytes, by wounding or contact with collagen.,similarity:Belongs to the epsin family.,similarity:Contains 1 ENTH (epsin N-terminal homology) domain.,similarity:Contains 2 UIM (ubiquitin-interacting motif) repeats.,subcellular location:Concentrated in the perinuclear region and associated with clathrin-coated vesicles close to the cell periphery. May shuttle to the nucleus.,tissue specificity:Detected in migrating keratinocytes from wounded skin, but not in differentiating keratinocytes or in normal skin. Detected in chronic wounds, basal cell carcinoma and ulcerative colitis.,induction:In keratinocytes, by wounding or contact with collagen.,similarity:Belongs to the epsin family.,similarity:Contains 1 ENTH (epsin N-terminal homology) domain.,similarity:Contains 2 UIM (ubiquitin-interacting motif) repeats.,subcellular location:Concentrated in the perinuclear region and associated with clathrin-coated vesicles close to the cell periphery. May shuttle to the nucleus.,tissue specificity:Detected in migrating keratinocytes from wounded skin, but not in differentiating keratinocytes or in normal skin. Detected in chronic wounds, basal cell carcinoma and ulcerative colitis.,

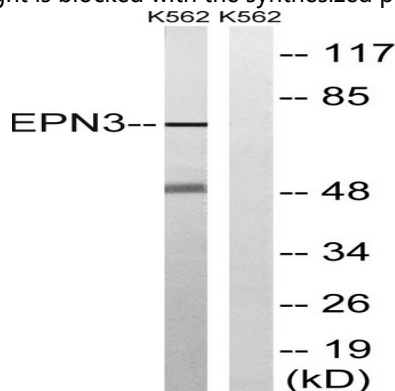
## Research Area

Endocytosis;

## Image Data



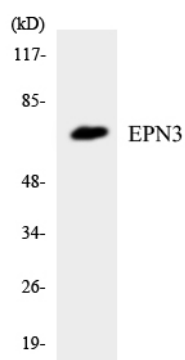
Immunohistochemistry analysis of paraffin-embedded human colon carcinoma tissue, using EPN3 Antibody. The picture on the right is blocked with the synthesized peptide.



Western blot analysis of lysates from K562 cells, using EPN3 Antibody. The lane on the right is blocked with the synthesized peptide.

**Product Name: Epsin 3 Rabbit Polyclonal Antibody**  
**Catalog #: APRab10556**

---



Western blot analysis of the lysates from COLO205 cells using EPN3 antibody.

### **Note**

For research use only.