

Summary

Production Name	Eps8L2 Rabbit Polyclonal Antibody
Description	Rabbit Polyclonal Antibody
Host	Rabbit
Application	WB,IHC-P,IF-P,IF-F,ICC/IF,ELISA
Reactivity	Human,Mouse

Performance

Conjugation	Unconjugated
Modification	Unmodified
Isotype	IgG
Clonality	Polyclonal
Form	Liquid
Storage	Store at 4°C short term. Aliquot and store at -20°C long term. Avoid freeze/thaw cycles.
Buffer	Liquid in PBS containing 50% glycerol, 0.5% BSA and 0.02% New type preservative N.
Purification	Affinity purification

Immunogen

Gene Name	EPS8L2
Alternative Names	EPS8L2; EPS8R2; PP13181; Epidermal growth factor receptor kinase substrate 8-like protein 2; EPS8-like protein 2; Epidermal growth factor receptor pathway substrate 8-related protein 2; EPS8-related protein 2
Gene ID	64787.0
SwissProt ID	Q9H6S3.The antiserum was produced against synthesized peptide derived from human ES8L2. AA range:1-50

Application

Dilution Ratio	WB 1:500-1:2000, IHC-P 1:100-1:300, IF-P/IF-F/ICC/IF 1:200-1:1000, ELISA 1:40000.Not yet tested in other applications.
-----------------------	------------------------------------------------------------------------------------------------------------------------

Product Name: Eps8L2 Rabbit Polyclonal Antibody
Catalog #: APRab10549



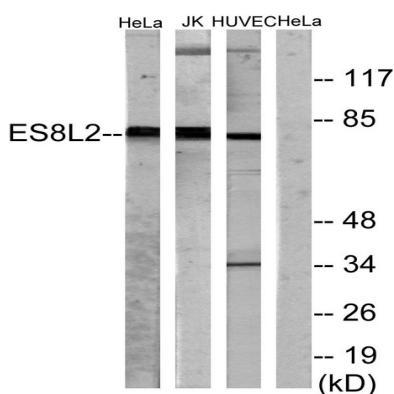
Molecular Weight 81kDa

Background

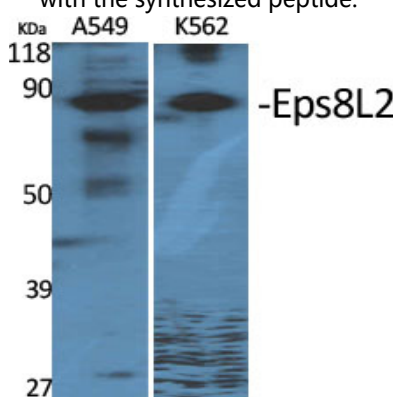
This gene encodes a member of the EPS8 gene family. The encoded protein, like other members of the family, is thought to link growth factor stimulation to actin organization, generating functional redundancy in the pathways that regulate actin cytoskeletal remodeling. [provided by RefSeq, Dec 2008],function:Stimulates guanine exchange activity of SOS1. May play a role in membrane ruffling and remodeling of the actin cytoskeleton.,similarity:Belongs to the EPS8 family.,similarity:Contains 1 PID domain.,similarity:Contains 1 SH3 domain.,subunit:Interacts with ABI1. Part of a complex that contains SOS1, ABI1 and EPS8L2. Associates with F-actin.,tissue specificity:Detected in fibroblasts and placenta.,

Research Area

Image Data

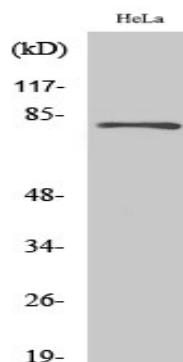


Western blot analysis of lysates from HeLa, Jurkat, and HUVEC cells, using ES8L2 Antibody. The lane on the right is blocked with the synthesized peptide.



Western Blot analysis of various cells using Eps8L2 Polyclonal Antibody

Product Name: Eps8L2 Rabbit Polyclonal Antibody
Catalog #: APRab10549



Western Blot analysis of HuvEc cells using Eps8L2 Polyclonal Antibody

Note

For research use only.