

Product Name: Endo G-L1 Rabbit Polyclonal Antibody
Catalog #: APRab10460



Summary

Production Name	Endo G-L1 Rabbit Polyclonal Antibody
Description	Rabbit Polyclonal Antibody
Host	Rabbit
Application	WB,ELISA
Reactivity	Human,Rat,Mouse

Performance

Conjugation	Unconjugated
Modification	Unmodified
Isotype	IgG
Clonality	Polyclonal
Form	Liquid
Storage	Store at 4°C short term. Aliquot and store at -20°C long term. Avoid freeze/thaw cycles.
Buffer	Liquid in PBS containing 50% glycerol, 0.5% BSA and 0.02% New type preservative N.
Purification	Affinity purification

Immunogen

Gene Name	EXOG
Alternative Names	EXOG; ENDOGL1; ENDOGL2; ENGL; Nuclease EXOG; mitochondrial; Endonuclease G-like 1; Endo G-like 1
Gene ID	9941.0
SwissProt ID	Q9Y2C4.The antiserum was produced against synthesized peptide derived from human ENDOGL1. AA range:171-220

Application

Dilution Ratio	WB 1:500-1:2000, ELISA 1:40000.Not yet tested in other applications.
Molecular Weight	41kDa

Product Name: Endo G-L1 Rabbit Polyclonal Antibody
Catalog #: APRab10460



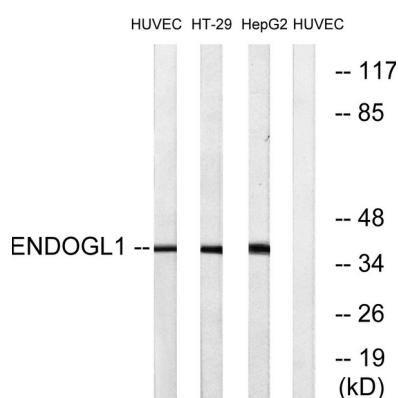
Background

This gene encodes an endo/exonuclease with 5'→3' exonuclease activity. The encoded enzyme catalyzes the hydrolysis of ester linkages at the 5' end of a nucleic acid chain. This enzyme is localized to the mitochondria and may play a role in programmed cell death. Alternatively spliced transcript variants have been described. A pseudogene exists on chromosome 18. [provided by RefSeq, Feb 2009], cofactor: Divalent metal cations, function: Endo/exonuclease with nicking activity towards supercoiled DNA, a preference for single stranded DNA and 5'-3' exonuclease activity, miscellaneous: The active site contains 1 hydrated divalent metal cation that has only 1 direct interaction with the protein; all other interactions are via water molecules, similarity: Belongs to the DNA/RNA non-specific endonuclease family, subunit: Homodimer, tissue specificity: Ubiquitous,

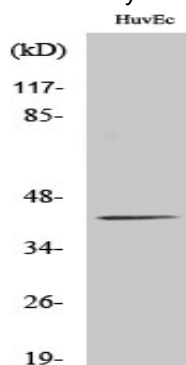
Research Area

Apoptosis_Inhibition; Apoptosis_Mitochondrial; Apoptosis_Overview;

Image Data



Western blot analysis of lysates from HUVEC, HT-29, and HepG2 cells, using ENDOGL1 Antibody. The lane on the right is blocked with the synthesized peptide.



Western Blot analysis of various cells using Endo G-L1 Polyclonal Antibody

Product Name: Endo G-L1 Rabbit Polyclonal Antibody
Catalog #: APRab10460



Note

For research use only.