

**Product Name: Eme1 Rabbit Polyclonal Antibody**  
**Catalog #: APRab10437**

---

## Summary

<b>Production Name</b>	Eme1 Rabbit Polyclonal Antibody
<b>Description</b>	Rabbit Polyclonal Antibody
<b>Host</b>	Rabbit
<b>Application</b>	WB,ELISA
<b>Reactivity</b>	Human,Rat,Mouse

## Performance

<b>Conjugation</b>	Unconjugated
<b>Modification</b>	Unmodified
<b>Isotype</b>	IgG
<b>Clonality</b>	Polyclonal
<b>Form</b>	Liquid
<b>Storage</b>	Store at 4°C short term. Aliquot and store at -20°C long term. Avoid freeze/thaw cycles.
<b>Buffer</b>	Liquid in PBS containing 50% glycerol, 0.5% BSA and 0.02% New type preservative N.
<b>Purification</b>	Affinity purification

## Immunogen

<b>Gene Name</b>	EME1
<b>Alternative Names</b>	EME1; MMS4; Crossover junction endonuclease EME1; MMS4 homolog; hMMS4
<b>Gene ID</b>	146956.0
<b>SwissProt ID</b>	Q96AY2.Synthesized peptide derived from Eme1 . at AA range: 250-330

## Application

<b>Dilution Ratio</b>	WB 1:500-1:2000, ELISA 1:5000.Not yet tested in other applications.
<b>Molecular Weight</b>	65kDa

## Background

This gene encodes a protein that complexes with methyl methanesulfonate-sensitive UV-sensitive 81 protein to form an

**Product Name: Eme1 Rabbit Polyclonal Antibody**  
**Catalog #: APRab10437**

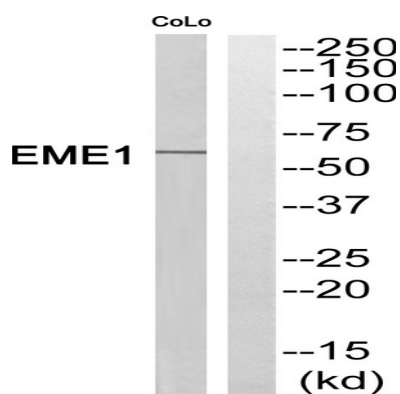


endonuclease complex. The encoded protein interacts with specific DNA structures including nicked Holliday junctions, 3'-flap structures and aberrant replication fork structures. This protein may be involved in repairing DNA damage and in maintaining genomic stability. Alternative splicing results in multiple transcript variants.[provided by RefSeq, Oct 2009],cofactor:Magnesium.,function:Interacts with MUS81 to form a DNA structure-specific endonuclease with substrate preference for branched DNA structures with a 5'-end at the branch nick. Typical substrates include 3'-flap structures, replication forks and nicked Holliday junctions. May be required in mitosis for the processing of stalled or collapsed replication forks.,similarity:Belongs to the EME1/MMS4 family.,subcellular location:Recruited to regions of DNA damage in S-phase cells.,subunit:May self-associate. Interacts with MUS81. Interacts with ERCC4 and FANCM.,

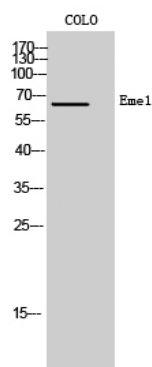
## Research Area

Homologous recombination;

## Image Data



Western blot analysis of EME1 Antibody. The lane on the right is blocked with the EME1 peptide.



Western Blot analysis of COLO cells using Eme1 Polyclonal Antibody cells nucleus extracted by Minute TM Cytoplasmic and Nuclear Fractionation kit (SC-003, Invent biotech, MN, USA) .

## Note

For research use only.

**Product Name: Eme1 Rabbit Polyclonal Antibody**  
**Catalog #: APRab10437**

---

