

Product Name: ELOVL1 Rabbit Polyclonal Antibody
Catalog #: APRab10422



Summary

Production Name	ELOVL1 Rabbit Polyclonal Antibody
Description	Rabbit Polyclonal Antibody
Host	Rabbit
Application	WB,IHC-P,IF-P,IF-F,ICC/IF,ELISA
Reactivity	Human,Mouse

Performance

Conjugation	Unconjugated
Modification	Unmodified
Isotype	IgG
Clonality	Polyclonal
Form	Liquid
Storage	Store at 4°C short term. Aliquot and store at -20°C long term. Avoid freeze/thaw cycles.
Buffer	Liquid in PBS containing 50% glycerol, 0.5% BSA and 0.02% New type preservative N.
Purification	Affinity purification

Immunogen

Gene Name	ELOVL1
Alternative Names	ELOVL1; SSC1; CGI-88; Elongation of very long chain fatty acids protein 1; 3-keto acyl-CoA synthase ELOVL1; ELOVL fatty acid elongase 1; ELOVL FA elongase 1
Gene ID	64834.0
SwissProt ID	Q9BW60.The antiserum was produced against synthesized peptide derived from human ELOVL1. AA range:101-150

Application

Dilution Ratio	WB 1:500-1:2000, ELISA 1:40000, IF-P/IF-F/ICC/IF 1:50-200
Molecular Weight	39kDa

Product Name: ELOVL1 Rabbit Polyclonal Antibody
Catalog #: AP Rab10422

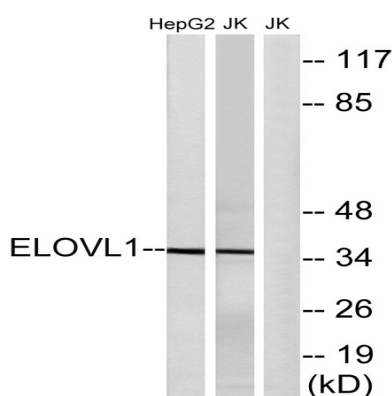


Background

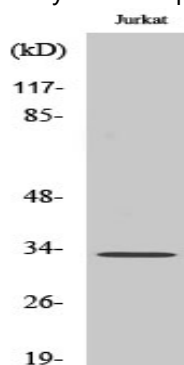
domain: The di-lysine motif confers endoplasmic reticulum localization for type I membrane proteins., function: Could be implicated in tissue-specific synthesis of very long chain fatty acids and sphingolipids. May catalyze one or both of the reduction reaction in fatty acid elongation, i.e., conversion of beta-ketoacyl CoA to beta-hydroxyacyl CoA or reduction of trans-2-enoyl CoA to the saturated acyl CoA derivative., similarity: Belongs to the ELO family., domain: The di-lysine motif confers endoplasmic reticulum localization for type I membrane proteins., function: Could be implicated in tissue-specific synthesis of very long chain fatty acids and sphingolipids. May catalyze one or both of the reduction reaction in fatty acid elongation, i.e., conversion of beta-ketoacyl CoA to beta-hydroxyacyl CoA or reduction of trans-2-enoyl CoA to the saturated acyl CoA derivative., similarity: Belongs to the ELO family.,

Research Area

Image Data

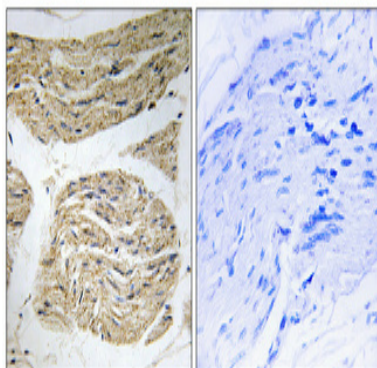


Western blot analysis of lysates from Jurkat and HepG2 cells, using ELOVL1 Antibody. The lane on the right is blocked with the synthesized peptide.



Western Blot analysis of various cells using ELOVL1 Polyclonal Antibody diluted at 1: 1000

Product Name: ELOVL1 Rabbit Polyclonal Antibody
Catalog #: APRab10422



Immunohistochemical analysis of paraffin-embedded Human skeletal muscle. Antibody was diluted at 1:100 (4°,overnight) . High-pressure and temperature Tris-EDTA,pH8.0 was used for antigen retrieval. Negative contrl (right) obtaned from antibody was pre-absorbed by immunogen peptide.

Note

For research use only.