

Summary

Production Name	EGFL5 Rabbit Polyclonal Antibody
Description	Rabbit Polyclonal Antibody
Host	Rabbit
Application	WB,ELISA
Reactivity	Human,Mouse,Rat

Performance

Conjugation	Unconjugated
Modification	Unmodified
Isotype	IgG
Clonality	Polyclonal
Form	Liquid
Storage	Store at 4°C short term. Aliquot and store at -20°C long term. Avoid freeze/thaw cycles.
Buffer	Liquid in PBS containing 50% glycerol, 0.5% BSA and 0.02% New type preservative N.
Purification	Affinity purification

Immunogen

Gene Name	MEGF9 MEGF9; EGFL5; KIAA0818; Multiple epidermal growth factor-like domains protein 9;
Alternative Names	Multiple EGF-like domains protein 9; Epidermal growth factor-like protein 5; EGF-like protein 5
Gene ID	1955.0
SwissProt ID	Q9H1U4.The antiserum was produced against synthesized peptide derived from human MEGF9. AA range:383-432

Application

Dilution Ratio	WB 1:500-1:2000, ELISA 1:40000.Not yet tested in other applications.
Molecular Weight	63kDa

Product Name: EGFL5 Rabbit Polyclonal Antibody
Catalog #: APRab10334

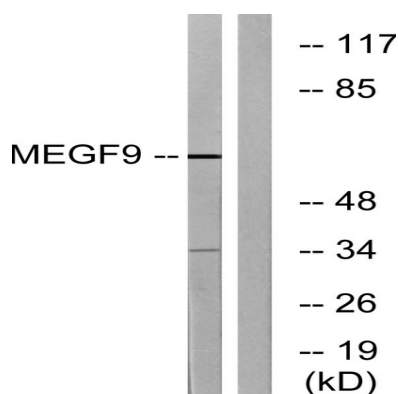


Background

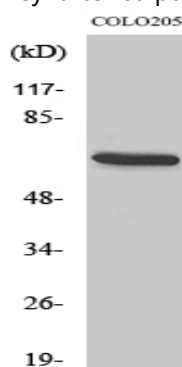
caution:It is uncertain whether Met-1 or Met-9 is the initiator.,polymorphism:The poly-Ala stretch (positions 24 to 31) may be polymorphic and varies from 6 to 8 Ala residues.,sequence caution:Intron retention.,similarity:Contains 5 laminin EGF-like domains.,caution:It is uncertain whether Met-1 or Met-9 is the initiator.,polymorphism:The poly-Ala stretch (positions 24 to 31) may be polymorphic and varies from 6 to 8 Ala residues.,sequence caution:Intron retention.,similarity:Contains 5 laminin EGF-like domains.,

Research Area

Image Data



Western blot analysis of lysates from COLO cells, using MEGF9 Antibody. The lane on the right is blocked with the synthesized peptide.



Western Blot analysis of various cells using EGFL5 Polyclonal Antibody diluted at 1: 500

Note

For research use only.