

**Product Name: EEA1 Rabbit Polyclonal Antibody**  
**Catalog #: APRab10307**



## Summary

<b>Production Name</b>	EEA1 Rabbit Polyclonal Antibody
<b>Description</b>	Rabbit Polyclonal Antibody
<b>Host</b>	Rabbit
<b>Application</b>	WB,ELISA
<b>Reactivity</b>	Human,Mouse

## Performance

<b>Conjugation</b>	Unconjugated
<b>Modification</b>	Unmodified
<b>Isotype</b>	IgG
<b>Clonality</b>	Polyclonal
<b>Form</b>	Liquid
<b>Storage</b>	Store at 4°C short term. Aliquot and store at -20°C long term. Avoid freeze/thaw cycles.
<b>Buffer</b>	Liquid in PBS containing 50% glycerol, 0.5% BSA and 0.02% New type preservative N.
<b>Purification</b>	Affinity purification

## Immunogen

<b>Gene Name</b>	EEA1
<b>Alternative Names</b>	EEA1; ZFYVE2; Early endosome antigen 1; Endosome-associated protein p162; Zinc finger FYVE domain-containing protein 2
<b>Gene ID</b>	8411.0
<b>SwissProt ID</b>	Q15075.The antiserum was produced against synthesized peptide derived from human EEA1. AA range:205-254

## Application

<b>Dilution Ratio</b>	WB 1:500-1:2000, ELISA 1:20000.Not yet tested in other applications.
<b>Molecular Weight</b>	162kDa

**Product Name: EEA1 Rabbit Polyclonal Antibody**  
**Catalog #: APRab10307**



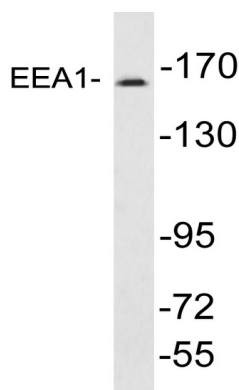
## Background

disease:Antibodies against EEA1 are found in sera from patients with subacute cutaneous lupus erythematosus and other autoimmune diseases.,domain:The FYVE-type zinc finger domain mediates interactions with phosphatidylinositol 3-phosphate.,function:Binds phospholipid vesicles containing phosphatidylinositol 3-phosphate and participates in endosomal trafficking.,similarity:Contains 1 C2H2-type zinc finger.,similarity:Contains 1 FYVE-type zinc finger.,subunit:Homodimer. Binds STX6. Binds RAB5A, RAB5B, RAB5C and RAB22A that have been activated by GTP-binding.,disease:Antibodies against EEA1 are found in sera from patients with subacute cutaneous lupus erythematosus and other autoimmune diseases.,domain:The FYVE-type zinc finger domain mediates interactions with phosphatidylinositol 3-phosphate.,function:Binds phospholipid vesicles containing phosphatidylinositol 3-phosphate and participates in endosomal trafficking.,similarity:Contains 1 C2H2-type zinc finger.,similarity:Contains 1 FYVE-type zinc finger.,subunit:Homodimer. Binds STX6. Binds RAB5A, RAB5B, RAB5C and RAB22A that have been activated by GTP-binding.,

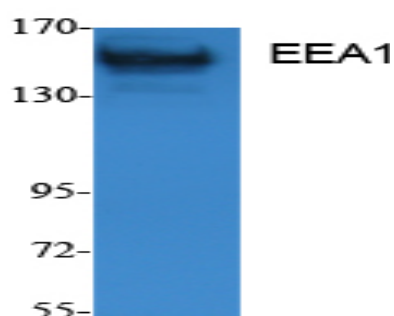
## Research Area

Endocytosis;

## Image Data



Western blot analysis of lysates from A431 cells , using EEA1 antibody.  
(kD)



Western Blot analysis of extracts from K562 cells, using EEA1 Polyclonal Antibody.. Secondary antibody was diluted at

**Product Name: EEA1 Rabbit Polyclonal Antibody**  
**Catalog #: APRab10307**

---



1:20000

**Note**

For research use only.