

Product Name: EBP2 Rabbit Polyclonal Antibody
Catalog #: APRab10276



Summary

Production Name	EBP2 Rabbit Polyclonal Antibody
Description	Rabbit Polyclonal Antibody
Host	Rabbit
Application	WB,ELISA
Reactivity	Human,Mouse

Performance

Conjugation	Unconjugated
Modification	Unmodified
Isotype	IgG
Clonality	Polyclonal
Form	Liquid
Storage	Store at 4°C short term. Aliquot and store at -20°C long term. Avoid freeze/thaw cycles.
Buffer	Liquid in PBS containing 50% glycerol, and 0.02% New type preservative N.
Purification	Affinity purification

Immunogen

Gene Name	EBNA1BP2 EBP2
Alternative Names	
Gene ID	10969.0
SwissProt ID	Q99848. Synthesized peptide derived from human protein . at AA range: 140-220

Application

Dilution Ratio	WB 1:500-2000, ELISA 1:5000-20000
Molecular Weight	33kDa

Background

function:Required for the processing of the 27S pre-rRNA.,similarity:Belongs to the EBP2 family.,subunit:Specifically interacts with EBV EBNA1. The EBNA1-EBP2 interaction is important for the stable segregation of EBV episomes during cell

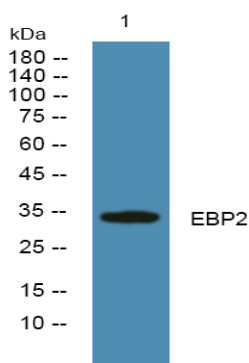
Product Name: EBP2 Rabbit Polyclonal Antibody
Catalog #: APRab10276



division.,tissue specificity:Ubiquitous.,function:Required for the processing of the 27S pre-rRNA.,similarity:Belongs to the EBP2 family.,subunit:Specifically interacts with EBV EBNA1. The EBNA1-EBP2 interaction is important for the stable segregation of EBV episomes during cell division.,tissue specificity:Ubiquitous.,

Research Area

Image Data



Western blot analysis of lysates from PC12 cells, primary antibody was diluted at 1:1000, 4° over night

Note

For research use only.