

Summary

Production Name	Dyrk4 Rabbit Polyclonal Antibody
Description	Rabbit Polyclonal Antibody
Host	Rabbit
Application	WB,ELISA
Reactivity	Human,Rat,Mouse

Performance

Conjugation	Unconjugated
Modification	Unmodified
Isotype	IgG
Clonality	Polyclonal
Form	Liquid
Storage	Store at 4°C short term. Aliquot and store at -20°C long term. Avoid freeze/thaw cycles.
Buffer	Liquid in PBS containing 50% glycerol, 0.5% BSA and 0.02% New type preservative N.
Purification	Affinity purification

Immunogen

Gene Name	DYRK4
Alternative Names	DYRK4; Dual specificity tyrosine-phosphorylation-regulated kinase 4
Gene ID	8798.0
SwissProt ID	Q9NR20. Synthesized peptide derived from Dyrk4 . at AA range: 350-430

Application

Dilution Ratio	WB 1:500-1:2000, ELISA 1:10000.Not yet tested in other applications.
Molecular Weight	60kDa

Background

This gene encodes an enzyme that belongs to a conserved family of serine/threonine protein kinases. Members of this dual specificity kinase family are thought to function in the regulation of cell differentiation and proliferation, survival, and in

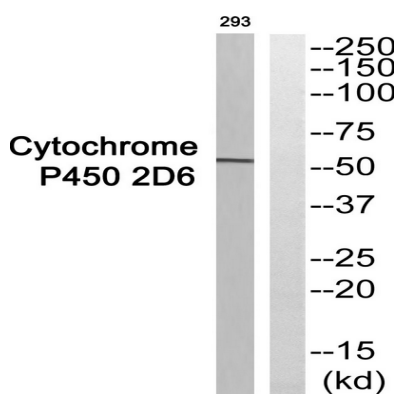
Product Name: Dyrk4 Rabbit Polyclonal Antibody
Catalog #: AP Rab10240



development. Alternate splicing results in multiple transcript variants. Additional alternatively spliced transcript variants of this gene have been described, but their full-length nature is not known. [provided by RefSeq, Aug 2013], catalytic activity: ATP + a protein = ADP + a phosphoprotein., cofactor: Magnesium., function: Possible non-essential role in spermiogenesis., PTM: Autophosphorylated on tyrosine residues., similarity: Belongs to the protein kinase superfamily. CMGC Ser/Thr protein kinase family. MNB/DYRK subfamily., similarity: Contains 1 protein kinase domain.,

Research Area

Image Data



Western blot analysis of Dyrk4 Antibody. The lane on the right is blocked with the Dyrk4 peptide.

Note

For research use only.