

Product Name: Dyrk1B Rabbit Polyclonal Antibody
Catalog #: APRab10236



Summary

Production Name	Dyrk1B Rabbit Polyclonal Antibody
Description	Rabbit Polyclonal Antibody
Host	Rabbit
Application	WB,IHC-P,IF-P,IF-F,ICC/IF,ELISA
Reactivity	Human,Mouse

Performance

Conjugation	Unconjugated
Modification	Unmodified
Isotype	IgG
Clonality	Polyclonal
Form	Liquid
Storage	Store at 4°C short term. Aliquot and store at -20°C long term. Avoid freeze/thaw cycles.
Buffer	Liquid in PBS containing 50% glycerol, 0.5% BSA and 0.02% New type preservative N.
Purification	Affinity purification

Immunogen

Gene Name	DYRK1B
Alternative Names	DYRK1B; MIRK; Dual specificity tyrosine-phosphorylation-regulated kinase 1B; Minibrain-related kinase; Mirk protein kinase
Gene ID	9149.0
SwissProt ID	Q9Y463.The antiserum was produced against synthesized peptide derived from human DYRK1B. AA range:331-380

Application

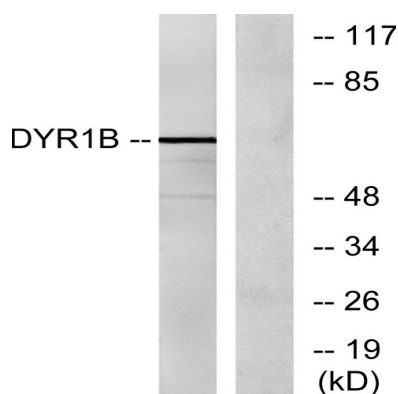
Dilution Ratio	WB 1:500-1:2000, IHC-P 1:100-1:300, ELISA 1:20000, IF-P/IF-F/ICC/IF 1:50-200
Molecular Weight	70kDa

Background

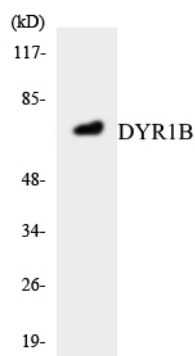
This gene encodes a member of a family of nuclear-localized protein kinases. The encoded protein participates in the regulation of the cell cycle. Expression of this gene may be altered in tumor cells, and mutations in this gene were found to cause abdominal obesity-metabolic syndrome 3. Alternative splicing results in multiple transcript variants. [provided by RefSeq, Jun 2014],catalytic activity:ATP + a protein = ADP + a phosphoprotein.,enzyme regulation:Inhibited by RANBP9.,function:Dual-specificity kinase which possesses both serine/ threonine and tyrosine kinase activities. Enhances the transcriptional activity of TCF1/HNF1A and FOXO1. Inhibits epithelial cell migration. Mediates colon carcinoma cell survival in mitogen-poor environments.,PTM:Autophosphorylated on tyrosine residues. Phosphorylated by MAP kinase. Tyrosine phosphorylation may be required for dimerization.,similarity:Belongs to the protein kinase superfamily. CMGC Ser/Thr protein kinase family. MNB/DYRK subfamily.,similarity:Contains 1 protein kinase domain.,subunit:Dimer. Interacts with DCOHM, MAP2K3/MKK3, RANBP9 and TCF1/HNF1A. Part of a complex consisting of RANBP9, RAN, DYRK1B and COPS5.,tissue specificity:Highest expression in skeletal muscle, testis, heart and brain with little expression in colon or lung. Expressed in a variety of tumor cell lines.,

Research Area

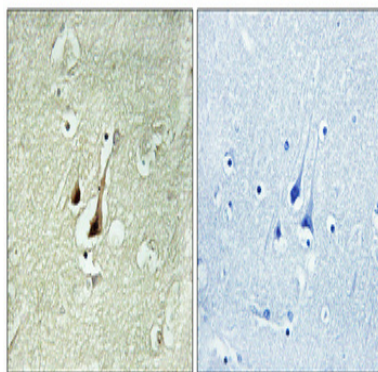
Image Data



Product Name: Dyrk1B Rabbit Polyclonal Antibody
Catalog #: APRab10236



Western blot analysis of the lysates from COLO205 cells using DYR1B antibody.



Immunohistochemical analysis of paraffin-embedded Human brain. Antibody was diluted at 1:100 (4°, overnight) . High-pressure and temperature Tris-EDTA, pH 8.0 was used for antigen retrieval. Negative control (right) obtained from antibody was pre-absorbed by immunogen peptide.

Note

For research use only.