

**Product Name: Dynein LC 2B Rabbit Polyclonal Antibody**  
**Catalog #: APRab10231**

---

## Summary

<b>Production Name</b>	Dynein LC 2B Rabbit Polyclonal Antibody
<b>Description</b>	Rabbit Polyclonal Antibody
<b>Host</b>	Rabbit
<b>Application</b>	IHC-P,IF-P,IF-F,ICC/IF,ELISA
<b>Reactivity</b>	Human,Mouse

## Performance

<b>Conjugation</b>	Unconjugated
<b>Modification</b>	Unmodified
<b>Isotype</b>	IgG
<b>Clonality</b>	Polyclonal
<b>Form</b>	Liquid
<b>Storage</b>	Store at 4°C short term. Aliquot and store at -20°C long term. Avoid freeze/thaw cycles.
<b>Buffer</b>	Liquid in PBS containing 50% glycerol, 0.5% BSA and 0.02% New type preservative N.
<b>Purification</b>	Affinity purification

## Immunogen

<b>Gene Name</b>	DYNLRB2
<b>Alternative Names</b>	DYNLRB2; DNCL2B; DNLC2B; ROBLD2; Dynein light chain roadblock-type 2; Dynein light chain 2B; cytoplasmic; Roadblock domain-containing protein 2
<b>Gene ID</b>	83657.0
<b>SwissProt ID</b>	Q8TF09. The antiserum was produced against synthesized peptide derived from human DYNLRB2. AA range:21-70

## Application

<b>Dilution Ratio</b>	IHC-P 1:100-1:300, ELISA 1:10000, IF-P/IF-F/ICC/IF 1:50-200
<b>Molecular Weight</b>	

## Background

---

**Product Name: Dynein LC 2B Rabbit Polyclonal Antibody**  
**Catalog #: APRab10231**

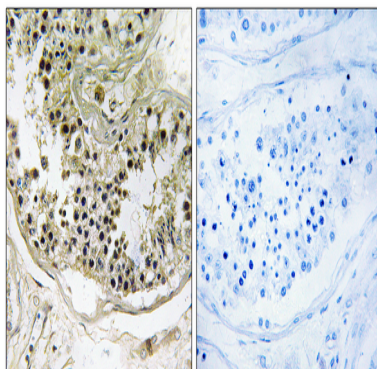
---



function:May be involved in assembly and motor function of dynein, which plays a central role in cell division and intracellular transport.,miscellaneous:Expression is significantly down-regulated in hepatocellular carcinoma (HCC) patients.,similarity:Belongs to the GAMAD family.,tissue specificity:High expression in heart, brain, placenta, skeletal muscle, prostate and small intestine; moderate in kidney, pancreas, spleen, testis, ovary and colon; low in lung, liver, thymus and leukocyte.,function:May be involved in assembly and motor function of dynein, which plays a central role in cell division and intracellular transport.,miscellaneous:Expression is significantly down-regulated in hepatocellular carcinoma (HCC) patients.,similarity:Belongs to the GAMAD family.,tissue specificity:High expression in heart, brain, placenta, skeletal muscle, prostate and small intestine; moderate in kidney, pancreas, spleen, testis, ovary and colon; low in lung, liver, thymus and leukocyte.,

## Research Area

## Image Data



Immunohistochemistry analysis of paraffin-embedded human testis tissue, using DYNLRB2 Antibody. The picture on the right is blocked with the synthesized peptide.

## Note

For research use only.