

Product Name: Dvl-3 Rabbit Polyclonal Antibody
Catalog #: APRab10211



Summary

Production Name	Dvl-3 Rabbit Polyclonal Antibody
Description	Rabbit Polyclonal Antibody
Host	Rabbit
Application	WB,IHC-P,IF-P,IF-F,ICC/IF,ELISA
Reactivity	Human,Mouse

Performance

Conjugation	Unconjugated
Modification	Unmodified
Isotype	IgG
Clonality	Polyclonal
Form	Liquid
Storage	Store at 4°C short term. Aliquot and store at -20°C long term. Avoid freeze/thaw cycles.
Buffer	Liquid in PBS containing 50% glycerol, 0.5% BSA and 0.02% New type preservative N.
Purification	Affinity purification

Immunogen

Gene Name	DVL3
Alternative Names	DVL3; KIAA0208; Segment polarity protein dishevelled homolog DVL-3; Dishevelled-3; DSH homolog 3
Gene ID	1857.0
SwissProt ID	Q92997.The antiserum was produced against synthesized peptide derived from human DVL3. AA range:326-375

Application

Dilution Ratio	WB 1:500-1:2000, IHC-P 1:100-1:300, ELISA 1:20000, IF-P/IF-F/ICC/IF 1:50-200
Molecular Weight	

Product Name: Dvl-3 Rabbit Polyclonal Antibody
Catalog #: APRab10211



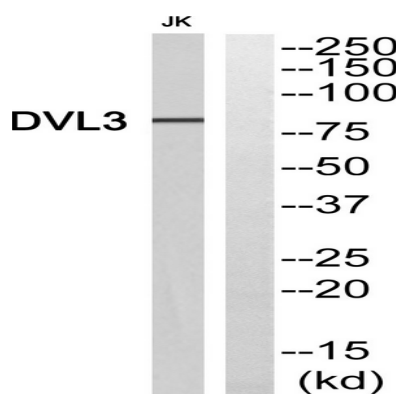
Background

This gene is a member of a multi-gene family which shares strong similarity with the Drosophila dishevelled gene, dsh. The Drosophila dishevelled gene encodes a cytoplasmic phosphoprotein that regulates cell proliferation. [provided by RefSeq, Jul 2008],function:May play a role in the signal transduction pathway mediated by multiple Wnt genes.,similarity:Belongs to the DSH family.,similarity:Contains 1 DEP domain.,similarity:Contains 1 DIX domain.,similarity:Contains 1 PDZ (DHR) domain.,subunit:Interacts (via the PDZ domain) with the C-terminal regions of VANG1 and VANG2 (By similarity). Interacts (via the region containing both the PDZ and DEP domains) with LRRFIP2; the DIX domain may inhibit this interaction.,

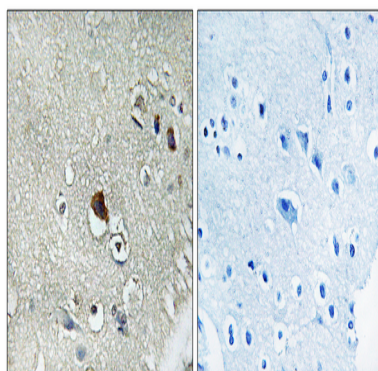
Research Area

WNT;WNT-T CELLNotch;Melanogenesis;Pathways in cancer;Colorectal cancer;Basal cell carcinoma;

Image Data

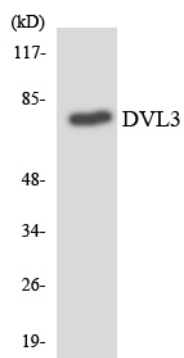


Western blot analysis of DVL3 Antibody. The lane on the right is blocked with the DVL3 peptide.



Immunohistochemistry analysis of paraffin-embedded human brain tissue, using DVL3 Antibody. The picture on the right is blocked with the synthesized peptide.

Product Name: Dvl-3 Rabbit Polyclonal Antibody
Catalog #: APRab10211



Western blot analysis of the lysates from Jurkat cells using DVL3 antibody.

Note

For research use only.