

Product Name: Dvl-2 Rabbit Polyclonal Antibody
Catalog #: APRab10210



Summary

Production Name	Dvl-2 Rabbit Polyclonal Antibody
Description	Rabbit Polyclonal Antibody
Host	Rabbit
Application	WB,IHC-P,IF-P,IF-F,ICC/IF,ELISA
Reactivity	Human,Mouse

Performance

Conjugation	Unconjugated
Modification	Unmodified
Isotype	IgG
Clonality	Polyclonal
Form	Liquid
Storage	Store at 4°C short term. Aliquot and store at -20°C long term. Avoid freeze/thaw cycles.
Buffer	Liquid in PBS containing 50% glycerol, 0.5% BSA and 0.02% New type preservative N.
Purification	Affinity purification

Immunogen

Gene Name	DVL2
Alternative Names	DVL2; Segment polarity protein dishevelled homolog DVL-2; Dishevelled-2; DSH homolog 2
Gene ID	1856.0
SwissProt ID	O14641. Synthesized peptide derived from Dvl-2 . at AA range: 670-750

Application

Dilution Ratio	WB 1:500-1:2000, IHC-P 1:100-1:300, ELISA 1:40000, IF-P/IF-F/ICC/IF 1:50-200
Molecular Weight	80kDa

Background

This gene encodes a member of the dishevelled (dsh) protein family. The vertebrate dsh proteins have approximately 40%

Product Name: Dvl-2 Rabbit Polyclonal Antibody
Catalog #: AP Rab10210

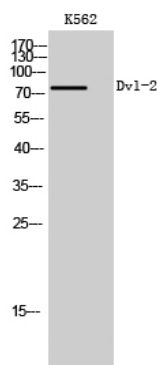


amino acid sequence similarity with Drosophila dsh. This gene encodes a 90-kD protein that undergoes posttranslational phosphorylation to form a 95-kD cytoplasmic protein, which may play a role in the signal transduction pathway mediated by multiple Wnt proteins. The mechanisms of dishevelled function in Wnt signaling are likely to be conserved among metazoans. [provided by RefSeq, Jul 2008],function:May play a role in the signal transduction pathway mediated by multiple Wnt genes.,PTM:Phosphorylated.,similarity:Belongs to the DSH family.,similarity:Contains 1 DEP domain.,similarity:Contains 1 DIX domain.,similarity:Contains 1 PDZ (DHR) domain.,subunit:Interacts through its PDZ domain with the C-terminal regions of VANGL1 and VANGL2 (By similarity). Interacts with DIXDC1 and Rac.,

Research Area

WNT;WNT-T CELLNotch;Melanogenesis;Pathways in cancer;Colorectal cancer;Basal cell carcinoma;

Image Data



Western Blot analysis of K562 cells using Dvl-2 Polyclonal Antibody

Note

For research use only.