

Product Name: dTMP Kinase Rabbit Polyclonal Antibody
Catalog #: APRab10186

Summary

Production Name	dTMP Kinase Rabbit Polyclonal Antibody
Description	Rabbit Polyclonal Antibody
Host	Rabbit
Application	WB,IHC-P,IF-P,IF-F,ICC/IF,ELISA
Reactivity	Human,Rat,Mouse

Performance

Conjugation	Unconjugated
Modification	Unmodified
Isotype	IgG
Clonality	Polyclonal
Form	Liquid
Storage	Store at 4°C short term. Aliquot and store at -20°C long term. Avoid freeze/thaw cycles.
Buffer	Liquid in PBS containing 50% glycerol, 0.5% BSA and 0.02% New type preservative N.
Purification	Affinity purification

Immunogen

Gene Name	DTYMK
Alternative Names	DTYMK; CDC8; TMPK; TYMK; Thymidylate kinase; dTMP kinase
Gene ID	1841.0
SwissProt ID	P23919.The antiserum was produced against synthesized peptide derived from human DTYMK. AA range:1-50

Application

Dilution Ratio	WB 1:500-1:2000, IHC-P 1:100-1:300, ELISA 1:20000, IF-P/IF-F/ICC/IF 1:50-200
Molecular Weight	22kDa

Background

Product Name: dTMP Kinase Rabbit Polyclonal Antibody
Catalog #: APRab10186

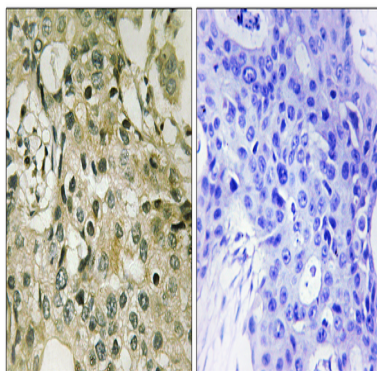


catalytic activity:ATP + dTMP = ADP + dTDP.,function:Catalyzes the conversion of dTMP to dTDP.,pathway:Pyrimidine metabolism; dTTP biosynthesis.,similarity:Belongs to the thymidylate kinase family.,catalytic activity:ATP + dTMP = ADP + dTDP.,function:Catalyzes the conversion of dTMP to dTDP.,pathway:Pyrimidine metabolism; dTTP biosynthesis.,similarity:Belongs to the thymidylate kinase family.,

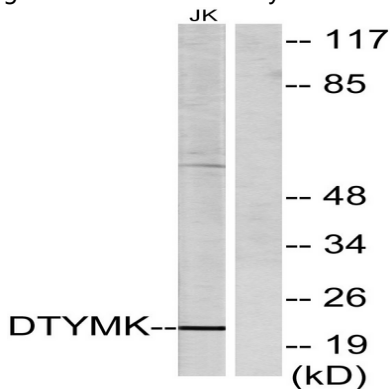
Research Area

Pyrimidine metabolism;

Image Data

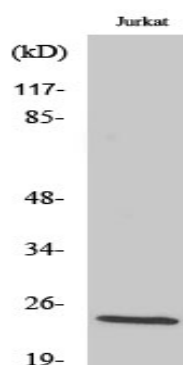


Immunohistochemistry analysis of paraffin-embedded human breast carcinoma tissue, using DTYMK Antibody. The picture on the right is blocked with the synthesized peptide.



Western blot analysis of lysates from Jurkat cells, using DTYMK Antibody. The lane on the right is blocked with the synthesized peptide.

Product Name: dTMP Kinase Rabbit Polyclonal Antibody
Catalog #: APRab10186



Western Blot analysis of various cells using dTMP Kinase Polyclonal Antibody diluted at 1 : 500

Note

For research use only.