

Summary

Production Name	DPF2 Rabbit Polyclonal Antibody
Description	Rabbit Polyclonal Antibody
Host	Rabbit
Application	WB,IHC-P,IF-P,IF-F,ICC/IF,ELISA
Reactivity	Human,Mouse

Performance

Conjugation	Unconjugated
Modification	Unmodified
Isotype	IgG
Clonality	Polyclonal
Form	Liquid
Storage	Store at 4°C short term. Aliquot and store at -20°C long term. Avoid freeze/thaw cycles.
Buffer	Liquid in PBS containing 50% glycerol, 0.5% BSA and 0.02% New type preservative N.
Purification	Affinity purification

Immunogen

Gene Name	DPF2 DPF2; BAF45D; REQ; UBID4; Zinc finger protein ubi-d4; Apoptosis response zinc finger protein; BRG1-associated factor 45D; BAF45D; D4; zinc and double PHD fingers family 2; Protein requiem
Alternative Names	
Gene ID	5977.0
SwissProt ID	Q92785.The antiserum was produced against synthesized peptide derived from human REQU. AA range:151-200

Application

Dilution Ratio	WB 1:500-1:2000, IHC-P 1:100-1:300, IF-P/IF-F/ICC/IF 1:200-1:1000, ELISA 1:10000.Not yet tested in other applications.
-----------------------	--

Product Name: DPF2 Rabbit Polyclonal Antibody
Catalog #: AP Rab10127



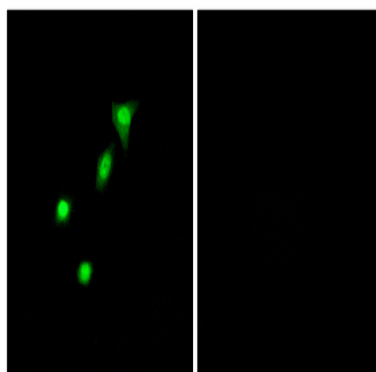
Molecular Weight 44kDa

Background

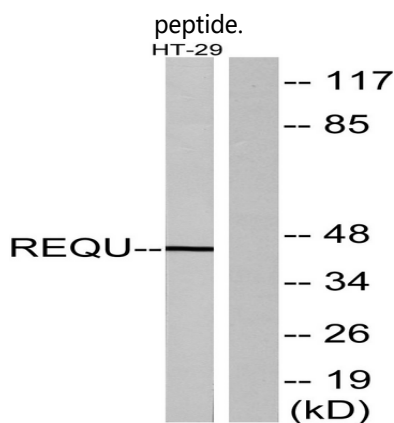
The protein encoded by this gene is a member of the d4 domain family, characterized by a zinc finger-like structural motif. This protein functions as a transcription factor which is necessary for the apoptotic response following deprivation of survival factors. It likely serves a regulatory role in rapid hematopoietic cell growth and turnover. This gene is considered a candidate gene for multiple endocrine neoplasia type I, an inherited cancer syndrome involving multiple parathyroid, enteropancreatic, and pituitary tumors. [provided by RefSeq, Jul 2008],function:May be a transcription factor required for the apoptosis response following survival factor withdrawal from myeloid cells. Might also have a role in the development and maturation of lymphoid cells.,similarity:Belongs to the requiem/DPF family.,similarity:Contains 1 C2H2-type zinc finger.,similarity:Contains 2 PHD-type zinc fingers.,subcellular location:30% nuclear. 70% cytoplasmic.,tissue specificity:Ubiquitous.,

Research Area

Image Data



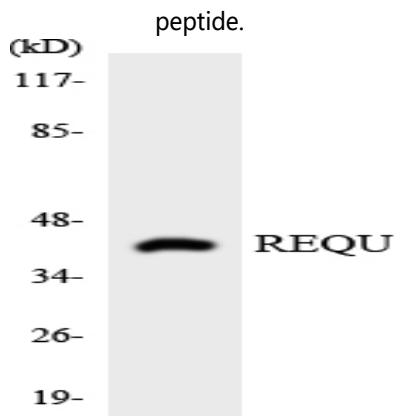
Immunofluorescence analysis of A549 cells, using REQU Antibody. The picture on the right is blocked with the synthesized



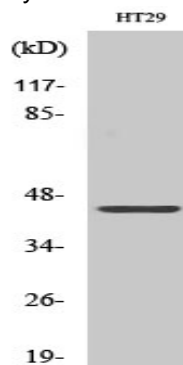
Product Name: DPF2 Rabbit Polyclonal Antibody
Catalog #: APRab10127



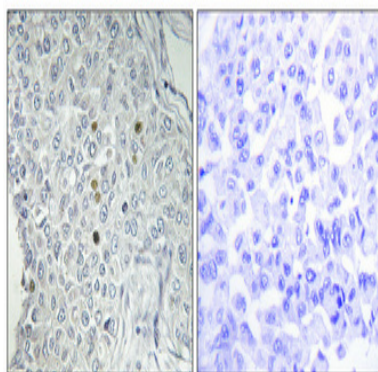
Western blot analysis of lysates from HT-29 cells, using REQU Antibody. The lane on the right is blocked with the synthesized peptide.



Western blot analysis of the lysates from RAW264.7 cells using REQU antibody.



Western Blot analysis of various cells using DPF2 Polyclonal Antibody



Immunohistochemical analysis of paraffin-embedded Human breast cancer. Antibody was diluted at 1:100 (4°, overnight) . High-pressure and temperature Tris-EDTA, pH 8.0 was used for antigen retrieval. Negative control (right) obtained from antibody was pre-absorbed by immunogen peptide.

Note

For research use only.