

Product Name: Dorfin Rabbit Polyclonal Antibody
Catalog #: APRab10119



Summary

Production Name	Dorfin Rabbit Polyclonal Antibody
Description	Rabbit Polyclonal Antibody
Host	Rabbit
Application	WB,ELISA
Reactivity	Human,Mouse

Performance

Conjugation	Unconjugated
Modification	Unmodified
Isotype	IgG
Clonality	Polyclonal
Form	Liquid
Storage	Store at 4°C short term. Aliquot and store at -20°C long term. Avoid freeze/thaw cycles.
Buffer	Liquid in PBS containing 50% glycerol, 0.5% BSA and 0.02% New type preservative N.
Purification	Affinity purification

Immunogen

Gene Name	RNF19A
Alternative Names	RNF19A; RNF19; E3 ubiquitin-protein ligase RNF19A; Double ring-finger protein; Dorfin; RING finger protein 19A; p38
Gene ID	25897.0
SwissProt ID	Q9NV58.The antiserum was produced against synthesized peptide derived from human RNF19A. AA range:51-100

Application

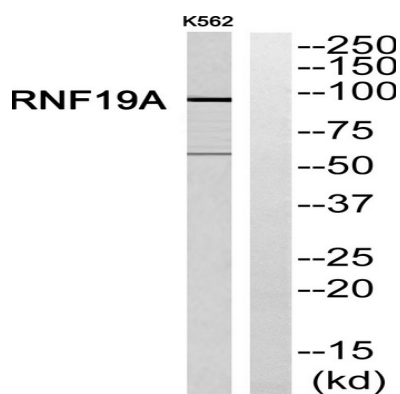
Dilution Ratio	WB 1:500-1:2000, ELISA 1:40000.Not yet tested in other applications.
Molecular Weight	90kDa

Background

This gene encodes a member of the ring between ring fingers (RBR) protein family, and the encoded protein contains two RING-finger motifs and an in between RING fingers motif. This protein is an E3 ubiquitin ligase that is localized to Lewy bodies, and ubiquitylates synphilin-1, which is an interacting protein of alpha synuclein in neurons. The encoded protein may be involved in amyotrophic lateral sclerosis and Parkinson's disease. Alternative splicing results in multiple transcript variants. [provided by RefSeq, Jul 2013],function:E3 ubiquitin-protein ligase which accepts ubiquitin from E2 ubiquitin-conjugating enzymes UBE2L3 and UBE2L6 in the form of a thioester and then directly transfers the ubiquitin to targeted substrates, such as SNCAIP or CASR. Specifically ubiquitinates pathogenic SOD1 variants, which leads to their proteasomal degradation and to neuronal protection.,pathway:Protein modification; protein ubiquitination.,PTM:Phosphorylated upon DNA damage, probably by ATM or ATR.,similarity:Belongs to the RBR family. RNF19 subfamily.,similarity:Contains 1 IBR-type zinc finger.,similarity:Contains 2 RING-type zinc fingers.,subcellular location:Present in the hyaline inclusion bodies specifically found in motor neurons from amyotrophic lateral sclerosis patients. Present in the Lewy bodies specifically found in neurons from Parkinson disease patients.,subunit:Interacts with UBE2L3 and UBE2L6. Interacts with transcription factor Sp1. Interacts with VCP, CASR, SNCAIP and with some SOD1 variants which cause amyotrophic lateral sclerosis, but not with wild-type SOD1.,tissue specificity:Widely expressed, with highest levels in heart. Ubiquitously expressed in the central nervous system.,

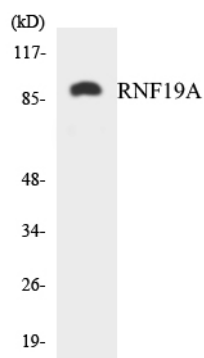
Research Area

Image Data



Western blot analysis of RNF19A Antibody. The lane on the right is blocked with the RNF19A peptide.

Product Name: Dorfin Rabbit Polyclonal Antibody
Catalog #: APRab10119



Western blot analysis of the lysates from Jurkat cells using RNF19A antibody.

Note

For research use only.