

## Summary

<b>Production Name</b>	DLC-1 Rabbit Polyclonal Antibody
<b>Description</b>	Rabbit Polyclonal Antibody
<b>Host</b>	Rabbit
<b>Application</b>	IHC-P,IF-P,IF-F,ICC/IF,ELISA
<b>Reactivity</b>	Human,Mouse,Rat

## Performance

<b>Conjugation</b>	Unconjugated
<b>Modification</b>	Unmodified
<b>Isotype</b>	IgG
<b>Clonality</b>	Polyclonal
<b>Form</b>	Liquid
<b>Storage</b>	Store at 4°C short term. Aliquot and store at -20°C long term. Avoid freeze/thaw cycles.
<b>Buffer</b>	Liquid in PBS containing 50% glycerol, 0.5% BSA and 0.02% New type preservative N.
<b>Purification</b>	Affinity purification

## Immunogen

<b>Gene Name</b>	DLC1 DLC1; ARHGAP7; KIAA1723; STARD12; Rho GTPase-activating protein 7; Deleted in liver cancer 1 protein; DLC-1; HP protein; Rho-type GTPase-activating protein 7; START domain-containing protein 12; StARD12; StAR-related lipid transfer protein
<b>Alternative Names</b>	
<b>Gene ID</b>	10395.0
<b>SwissProt ID</b>	Q96QB1.The antiserum was produced against synthesized peptide derived from human RHG07. AA range:61-110

## Application

<b>Dilution Ratio</b>	IHC-P 1:100-1:300, IF-P/IF-F/ICC/IF 1:200-1:1000, ELISA 1:10000.Not yet tested in other applications.
-----------------------	---

---

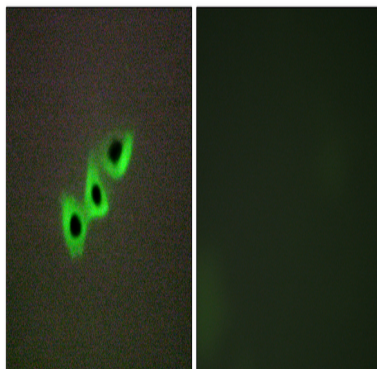
#### Molecular Weight

### Background

This gene encodes a GTPase-activating protein (GAP) that is a member of the rhoGAP family of proteins which play a role in the regulation of small GTP-binding proteins. GAP family proteins participate in signaling pathways that regulate cell processes involved in cytoskeletal changes. This gene functions as a tumor suppressor gene in a number of common cancers, including prostate, lung, colorectal, and breast cancers. Multiple transcript variants due to alternative promoters and alternative splicing have been found for this gene.[provided by RefSeq, Apr 2010],function:Functions as a GTPase-activating protein specific for Rho and an activator of PLCD1 in vivo and induces morphological changes and detachment through cytoskeletal reorganization.,sequence caution:Chimera. Sequence from position 1 to 13 is due to a chimera.,similarity:Contains 1 Rho-GAP domain.,similarity:Contains 1 SAM (sterile alpha motif) domain.,similarity:Contains 1 START domain.,tissue specificity:Highest level of expression in the spleen, with rather lower levels in prostate, testis, ovary, small intestine and colon, but none in the thymus.,

### Research Area

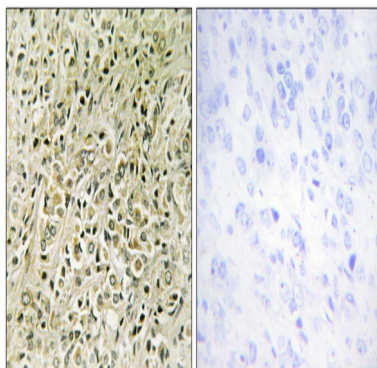
### Image Data



Immunofluorescence analysis of A549 cells, using RHG07 Antibody. The picture on the right is blocked with the synthesized peptide.

**Product Name: DLC-1 Rabbit Polyclonal Antibody**  
**Catalog #: APRab10010**

---



Immunohistochemistry analysis of paraffin-embedded human prostate carcinoma tissue, using RHG07 Antibody. The picture on the right is blocked with the synthesized peptide.

#### **Note**

For research use only.