

Product Name: DEC2 Rabbit Polyclonal Antibody
Catalog #: APRab09896



Summary

Production Name	DEC2 Rabbit Polyclonal Antibody
Description	Rabbit Polyclonal Antibody
Host	Rabbit
Application	WB,IHC-P,IF-P,IF-F,ICC/IF,ELISA
Reactivity	Human,Mouse,Rat

Performance

Conjugation	Unconjugated
Modification	Unmodified
Isotype	IgG
Clonality	Polyclonal
Form	Liquid
Storage	Store at 4°C short term. Aliquot and store at -20°C long term. Avoid freeze/thaw cycles.
Buffer	Liquid in PBS containing 50% glycerol, 0.5% BSA and 0.02% New type preservative N.
Purification	Affinity purification

Immunogen

Gene Name	BHLHE41 BHLHE41; BHLHB3; DEC2; SHARP1; Class E basic helix-loop-helix protein 41; bHLHe41;
Alternative Names	Class B basic helix-loop-helix protein 3; bHLHb3; Differentially expressed in chondrocytes protein 2; hDEC2; Enhancer-of-split and hairy-related protein 1; S
Gene ID	79365.0
SwissProt ID	Q9C0J9. The antiserum was produced against synthesized peptide derived from human BHLHB3. AA range:1-50

Application

Dilution Ratio	WB 1:500-1:2000, IHC-P 1:100-1:300, ELISA 1:40000, IF-P/IF-F/ICC/IF 1:50-200
Molecular Weight	50kDa

Product Name: DEC2 Rabbit Polyclonal Antibody
Catalog #: APRab09896



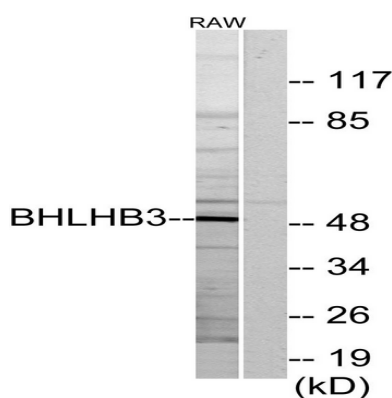
Background

This gene encodes a basic helix-loop-helix protein expressed in various tissues. The encoded protein can interact with ARNTL or compete for E-box binding sites in the promoter of PER1 and repress CLOCK/ARNTL's transactivation of PER1. This gene is believed to be involved in the control of circadian rhythm and cell differentiation. Defects in this gene are associated with the short sleep phenotype. [provided by RefSeq, Feb 2014],function:May be a transcriptional repressor that represses both basal and activated transcription.,similarity:Contains 1 basic helix-loop-helix (bHLH) domain.,similarity:Contains 1 Orange domain.,subunit:Homodimerize.,tissue specificity:Highly expressed in skeletal muscle and brain, moderately expressed in pancreas and heart, weakly expressed in placenta, lung, liver and kidney.,

Research Area

Circadian rhythm;

Image Data



Western blot analysis of lysates from RAW264.7 cells, using BHLHB3 Antibody. The lane on the right is blocked with the synthesized peptide.

Note

For research use only.