

Product Name: DDT Rabbit Polyclonal Antibody
Catalog #: APRab09870



Summary

Production Name	DDT Rabbit Polyclonal Antibody
Description	Rabbit Polyclonal Antibody
Host	Rabbit
Application	IHC-P,IF-P,IF-F,ICC/IF,ELISA
Reactivity	Human,Mouse,Rat

Performance

Conjugation	Unconjugated
Modification	Unmodified
Isotype	IgG
Clonality	Polyclonal
Form	Liquid
Storage	Store at 4°C short term. Aliquot and store at -20°C long term. Avoid freeze/thaw cycles.
Buffer	Liquid in PBS containing 50% glycerol, 0.5% BSA and 0.02% New type preservative N.
Purification	Affinity purification

Immunogen

Gene Name	DDT
Alternative Names	D-dopachrome decarboxylase (EC 4.1.1.84;D-dopachrome tautomerase;Phenylpyruvate tautomerase II)
Gene ID	1652.0
SwissProt ID	P30046.Synthetic peptide from human protein at AA range: 50-90

Application

Dilution Ratio	IHC-P 1:50-200, ELISA 1:10000-20000, IF-P/IF-F/ICC/IF 1:50-200
Molecular Weight	

Background

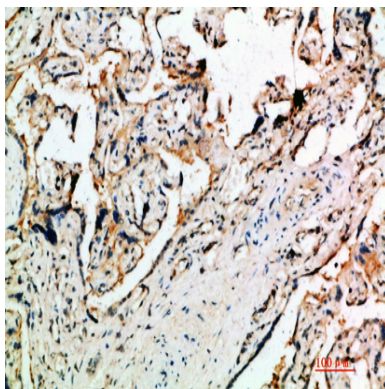
Product Name: DDT Rabbit Polyclonal Antibody
Catalog #: APRab09870



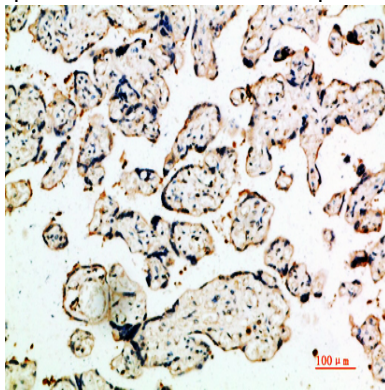
D-dopachrome tautomerase converts D-dopachrome into 5,6-dihydroxyindole. The DDT gene is related to the migration inhibitory factor (MIF) in terms of sequence, enzyme activity, and gene structure. DDT and MIF are closely linked on chromosome 22. [provided by RefSeq, Jul 2008],catalytic activity:D-dopachrome = 5,6-dihydroxyindole + CO(2),function:Tautomerization of D-dopachrome with decarboxylation to give 5,6-dihydroxyindole (DHI),similarity:Belongs to the MIF family,subunit:Homotrimer,

Research Area

Image Data



Immunohistochemical analysis of paraffin-embedded human-placenta, antibody was diluted at 1:200



Immunohistochemical analysis of paraffin-embedded human-placenta, antibody was diluted at 1:200

Note

For research use only.