

Product Name: DCC Rabbit Polyclonal Antibody
Catalog #: APRab09832



Summary

Production Name	DCC Rabbit Polyclonal Antibody
Description	Rabbit Polyclonal Antibody
Host	Rabbit
Application	WB,IF-P,IF-F,ICC/IF,ELISA
Reactivity	Human,Mouse,Rat

Performance

Conjugation	Unconjugated
Modification	Unmodified
Isotype	IgG
Clonality	Polyclonal
Form	Liquid
Storage	Store at 4°C short term. Aliquot and store at -20°C long term. Avoid freeze/thaw cycles.
Buffer	Liquid in PBS containing 50% glycerol, 0.5% BSA and 0.02% New type preservative N.
Purification	Affinity purification

Immunogen

Gene Name	DCC
Alternative Names	DCC; IGDCC1; Netrin receptor DCC; Colorectal cancer suppressor; Immunoglobulin superfamily DCC subclass member 1; Tumor suppressor protein DCC
Gene ID	1630.0
SwissProt ID	P43146.The antiserum was produced against synthesized peptide derived from human DCC. AA range:441-490

Application

Dilution Ratio	WB 1:500-1:2000, IF-P/IF-F/ICC/IF 1:200-1:1000, ELISA 1:20000.Not yet tested in other applications.
Molecular Weight	160kDa

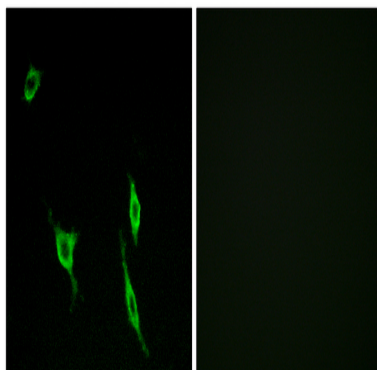
Background

This gene encodes a netrin 1 receptor. The transmembrane protein is a member of the immunoglobulin superfamily of cell adhesion molecules, and mediates axon guidance of neuronal growth cones towards sources of netrin 1 ligand. The cytoplasmic tail interacts with the tyrosine kinases Src and focal adhesion kinase (FAK, also known as PTK2) to mediate axon attraction. The protein partially localizes to lipid rafts, and induces apoptosis in the absence of ligand. The protein functions as a tumor suppressor, and is frequently mutated or downregulated in colorectal cancer and esophageal carcinoma. [provided by RefSeq, Oct 2009],disease:Colorectal tumors that lost their capacity to differentiate into mucus producing cells uniformly lack DCC expression. Inactivation of DCC due to allelic deletion and/or point mutations may cause both lymphatic and hematogenous metastasis of esophageal squamous cell carcinomas.,function:Receptor for netrin required for axon guidance. Mediates axon attraction of neuronal growth cones in the developing nervous system upon ligand binding. Its association with UNC5 proteins may trigger signaling for axon repulsion. It also acts as a dependence receptor required for apoptosis induction when not associated with netrin ligand. Implicated as a tumor suppressor gene.,PTM:Ubiquitinated; mediated by SIAH1 or SIAH2 and leading to its subsequent proteasomal degradation.,similarity:Belongs to the immunoglobulin superfamily. DCC family.,similarity:Contains 4 Ig-like C2-type (immunoglobulin-like) domains.,similarity:Contains 6 fibronectin type-III domains.,subunit:Interacts with the cytoplasmic part of UNC5A, UNC5B, UNC5C and probably UNC5D.,tissue specificity:Found in axons of the central and peripheral nervous system and in differentiated cell types of the intestine.,

Research Area

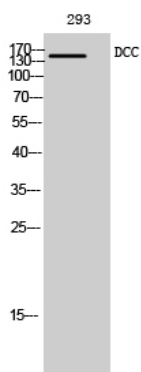
Axon guidance;Pathways in cancer;Colorectal cancer;

Image Data



Immunofluorescence analysis of LOVO cells, using DCC Antibody. The picture on the right is blocked with the synthesized peptide.

Product Name: DCC Rabbit Polyclonal Antibody
Catalog #: APRab09832



Western Blot analysis of 293 cells using DCC Polyclonal Antibody diluted at 1: 500

Note

For research use only.