

Summary

Production Name	DCAMKL3 Rabbit Polyclonal Antibody
Description	Rabbit Polyclonal Antibody
Host	Rabbit
Application	WB,IHC-P,IF-P,IF-F,ICC/IF,ELISA
Reactivity	Human,Rat,Mouse

Performance

Conjugation	Unconjugated
Modification	Unmodified
Isotype	IgG
Clonality	Polyclonal
Form	Liquid
Storage	Store at 4°C short term. Aliquot and store at -20°C long term. Avoid freeze/thaw cycles.
Buffer	Liquid in PBS containing 50% glycerol, 0.5% BSA and 0.02% New type preservative N.
Purification	Affinity purification

Immunogen

Gene Name	DCLK3 DCLK3; DCAMKL3; DCDC3C; KIAA1765; Serine/threonine-protein kinase DCLK3;
Alternative Names	Doublecortin domain-containing protein 3C; Doublecortin-like and CAM kinase-like 3; Doublecortin-like kinase 3
Gene ID	85443.0
SwissProt ID	Q9C098.The antiserum was produced against synthesized peptide derived from human DCLK3. AA range:291-340

Application

Dilution Ratio	WB 1:500-1:2000, IHC-P 1:100-1:300, ELISA 1:5000, IF-P/IF-F/ICC/IF 1:50-200
Molecular Weight	73kDa

Product Name: DCAMKL3 Rabbit Polyclonal Antibody
Catalog #: APRab09830

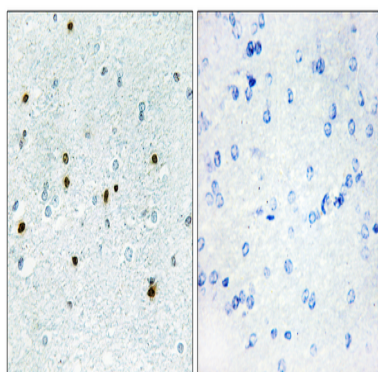


Background

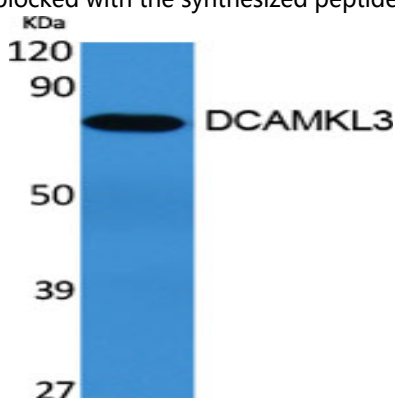
catalytic activity:ATP + a protein = ADP + a phosphoprotein.,similarity:Belongs to the protein kinase superfamily.,similarity:Belongs to the protein kinase superfamily. CAMK Ser/Thr protein kinase family. CaMK subfamily.,similarity:Contains 1 protein kinase domain.,catalytic activity:ATP + a phosphoprotein.,similarity:Belongs to the protein kinase superfamily.,similarity:Belongs to the protein kinase superfamily. CAMK Ser/Thr protein kinase family. CaMK subfamily.,similarity:Contains 1 protein kinase domain.,

Research Area

Image Data

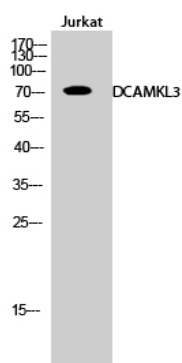


Immunohistochemistry analysis of paraffin-embedded human brain, using DCLK3 Antibody. The picture on the right is blocked with the synthesized peptide.



Western Blot analysis of various cells using DCAMKL3 Polyclonal Antibody

Product Name: DCAMKL3 Rabbit Polyclonal Antibody
Catalog #: APRab09830



Western Blot analysis of Jurkat cells using DCAMKL3 Polyclonal Antibody

Note

For research use only.