

Summary

Production Name	DBP Rabbit Polyclonal Antibody
Description	Rabbit Polyclonal Antibody
Host	Rabbit
Application	WB,ELISA
Reactivity	Human,Monkey

Performance

Conjugation	Unconjugated
Modification	Unmodified
Isotype	IgG
Clonality	Polyclonal
Form	Liquid
Storage	Store at 4°C short term. Aliquot and store at -20°C long term. Avoid freeze/thaw cycles.
Buffer	Liquid in PBS containing 50% glycerol, 0.5% BSA and 0.02% New type preservative N.
Purification	Affinity purification

Immunogen

Gene Name	GC
Alternative Names	GC; Vitamin D-binding protein; DBP; VDB; Gc-globulin; Group-specific component
Gene ID	2638.0
SwissProt ID	P02774.Synthesized peptide derived from DBP . at AA range: 90-170

Application

Dilution Ratio	WB 1:500-1:2000, ELISA 1:40000.Not yet tested in other applications.
Molecular Weight	55kDa

Background

The protein encoded by this gene belongs to the albumin gene family. It is a multifunctional protein found in plasma,

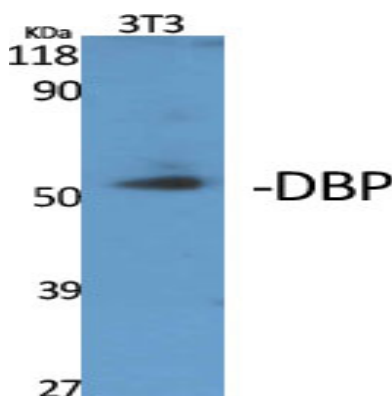
Product Name: DBP Rabbit Polyclonal Antibody
Catalog #: APRab09815



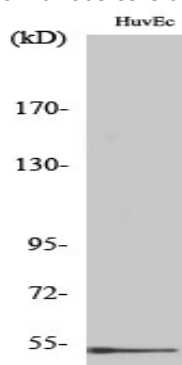
ascitic fluid, cerebrospinal fluid and on the surface of many cell types. It binds to vitamin D and its plasma metabolites and transports them to target tissues. Alternatively spliced transcript variants encoding different isoforms have been found for this gene.[provided by RefSeq, Feb 2011],function:Multifunctional protein found in plasma, ascitic fluid, cerebrospinal fluid, and urine and on the surface of many cell types. In plasma, it carries the vitamin D sterols and prevents polymerization of actin by binding its monomers. DBP associates with membrane-bound immunoglobulin on the surface of B-lymphocytes and with IgG Fc receptor on the membranes of T-lymphocytes.,polymorphism:Over 80 variants of human DBP have been identified. The three most common alleles are called GC*1F, GC*1S, and GC*2. The sequence shown is that of the GC*2 allele.,similarity:Belongs to the ALB/AFP/VDB family.,similarity:Contains 3 albumin domains.,

Research Area

Image Data



Western Blot analysis of various cells using DBP Polyclonal Antibody



Western Blot analysis of COS7 cells using DBP Polyclonal Antibody

Note

For research use only.