

Product Name: D1DR Rabbit Polyclonal Antibody
Catalog #: APRab09767



Summary

Production Name	D1DR Rabbit Polyclonal Antibody
Description	Rabbit Polyclonal Antibody
Host	Rabbit
Application	WB,IHC-P,IF-P,IF-F,ICC/IF,ELISA
Reactivity	Human,Mouse,Rat

Performance

Conjugation	Unconjugated
Modification	Unmodified
Isotype	IgG
Clonality	Polyclonal
Form	Liquid
Storage	Store at 4°C short term. Aliquot and store at -20°C long term. Avoid freeze/thaw cycles.
Buffer	Liquid in PBS containing 50% glycerol, 0.5% BSA and 0.02% New type preservative N.
Purification	Affinity purification

Immunogen

Gene Name	DRD1
Alternative Names	DRD1; D(1A) dopamine receptor; Dopamine D1 receptor
Gene ID	1812.0
SwissProt ID	P21728.The antiserum was produced against synthesized peptide derived from human DRD1. AA range:135-184

Application

Dilution Ratio	WB 1:500-1:2000, IHC-P 1:100-1:300, IF-P/IF-F/ICC/IF 1:200-1:1000, ELISA 1:5000.Not yet tested in other applications.
Molecular Weight	50kDa

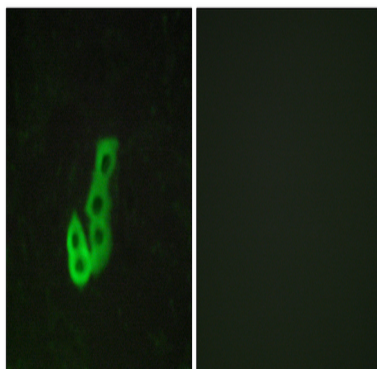
Background

This gene encodes the D1 subtype of the dopamine receptor. The D1 subtype is the most abundant dopamine receptor in the central nervous system. This G-protein coupled receptor stimulates adenylyl cyclase and activates cyclic AMP-dependent protein kinases. D1 receptors regulate neuronal growth and development, mediate some behavioral responses, and modulate dopamine receptor D2-mediated events. Alternate transcription initiation sites result in two transcript variants of this gene. [provided by RefSeq, Jul 2008],function:This is one of the five types (D1 to D5) of receptors for dopamine. The activity of this receptor is mediated by G proteins which activate adenylyl cyclase.,similarity:Belongs to the G-protein coupled receptor 1 family.,subcellular location:Transport from the endoplasmic reticulum to the cell surface is regulated by interaction with DNAJC14.,subunit:Interacts with DNAJC14 via its C-terminus (By similarity). Interacts with DRD1IP.,tissue specificity:Detected in caudate, nucleus accumbens and in the olfactory tubercle.,

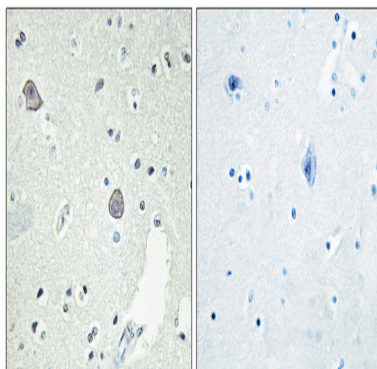
Research Area

Calcium;Neuroactive ligand-receptor interaction;Gap junction;

Image Data

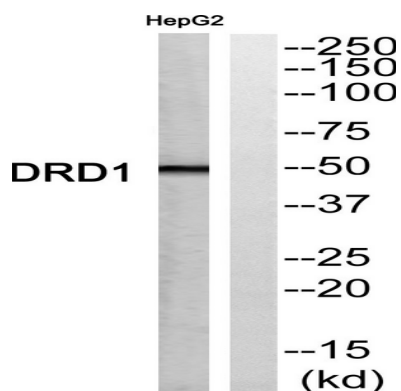


Immunofluorescence analysis of MCF7 cells, using DRD1 Antibody. The picture on the right is blocked with the synthesized peptide.

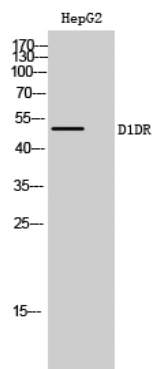


Immunohistochemistry analysis of paraffin-embedded human brain tissue, using DRD1 Antibody. The picture on the right is blocked with the synthesized peptide.

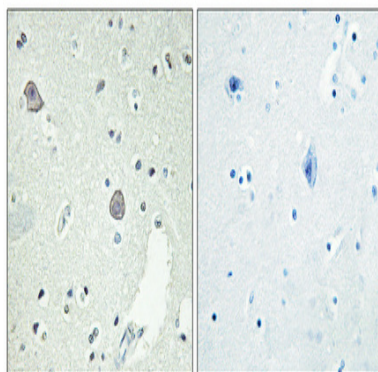
Product Name: D1DR Rabbit Polyclonal Antibody
Catalog #: APRab09767



Western blot analysis of DRD1 Antibody. The lane on the right is blocked with the DRD1 peptide.



Western Blot analysis of HepG2 cells using D1DR Polyclonal Antibody



Immunohistochemical analysis of paraffin-embedded Human brain. Antibody was diluted at 1:100 (4°, overnight) . High-pressure and temperature Tris-EDTA, pH 8.0 was used for antigen retrieval. Negative contrl (right) obtained from antibody was pre-absorbed by immunogen peptide.

Note

For research use only.