

Product Name: Cytochrome c1 Rabbit Polyclonal Antibody
Catalog #: APRab09710

Summary

Production Name	Cytochrome c1 Rabbit Polyclonal Antibody
Description	Rabbit Polyclonal Antibody
Host	Rabbit
Application	WB,IF-P,IF-F,ICC/IF,ELISA
Reactivity	Human,Mouse

Performance

Conjugation	Unconjugated
Modification	Unmodified
Isotype	IgG
Clonality	Polyclonal
Form	Liquid
Storage	Store at 4°C short term. Aliquot and store at -20°C long term. Avoid freeze/thaw cycles.
Buffer	Liquid in PBS containing 50% glycerol, 0.5% BSA and 0.02% New type preservative N.
Purification	Affinity purification

Immunogen

Gene Name	CYC1
Alternative Names	CYC1; Cytochrome c1; heme protein, mitochondrial; Complex III subunit 4; Complex III subunit IV; Cytochrome b-c1 complex subunit 4; Ubiquinol-cytochrome-c reductase complex cytochrome c1 subunit; Cytochrome c-1
Gene ID	1537.0
SwissProt ID	P08574.The antiserum was produced against synthesized peptide derived from human CYC1. AA range:132-181

Application

Dilution Ratio	WB 1:500-2000, IF-P/IF-F/ICC/IF/ICC 1:100-500, ELISA 1:5000-20000
Molecular Weight	35kDa

Product Name: Cytochrome c1 Rabbit Polyclonal Antibody
Catalog #: APRab09710

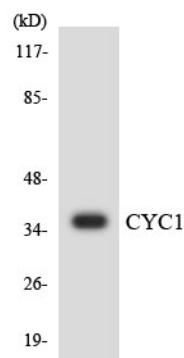
Background

This gene encodes a subunit of the cytochrome bc₁ complex, which plays an important role in the mitochondrial respiratory chain by transferring electrons from the Rieske iron-sulfur protein to cytochrome c. Mutations in this gene may cause mitochondrial complex III deficiency, nuclear type 6. [provided by RefSeq, Dec 2013],function:This is the heme-containing component of the cytochrome b-c₁ complex, which accepts electrons from Rieske protein and transfers electrons to cytochrome c in the mitochondrial respiratory chain.,PTM: Binds 1 heme group per subunit.,similarity: Belongs to the cytochrome c family.,subunit: The bc₁ complex contains 11 subunits: 3 respiratory subunits (cytochrome b, cytochrome c₁ and Rieske/UQCRC1), 2 core proteins (UQCRC1/QCR1 and UQCRC2/QCR2) and 6 low-molecular weight proteins (UQCRH/QCR6, UQCRB/QCR7, UQCRC3/QCR8, UQCR10/QCR9, UQCR11/QCR10 and a cleavage product of Rieske/UQCRC1),.

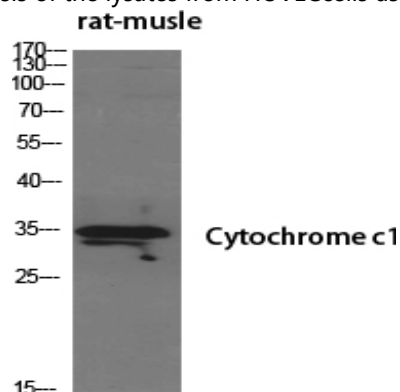
Research Area

Oxidative phosphorylation; Cardiac muscle contraction; Alzheimer's disease; Parkinson's disease; Huntington's disease;

Image Data



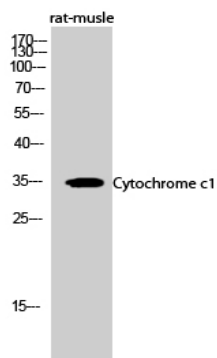
Western blot analysis of the lysates from HUVEC cells using CYC1 antibody.



Product Name: Cytochrome c1 Rabbit Polyclonal Antibody
Catalog #: APRab09710



Western Blot analysis of various cells using Cytochrome c1 Polyclonal Antibody diluted at 1: 500



Western Blot analysis of rat-muscle cells using Cytochrome c1 Polyclonal Antibody diluted at 1: 500

Note

For research use only.