

## Summary

<b>Production Name</b>	CYTL1 Rabbit Polyclonal Antibody
<b>Description</b>	Rabbit Polyclonal Antibody
<b>Host</b>	Rabbit
<b>Application</b>	WB,IHC-P,IF-P,IF-F,ICC/IF,ELISA
<b>Reactivity</b>	Human,Rat,Mouse

## Performance

<b>Conjugation</b>	Unconjugated
<b>Modification</b>	Unmodified
<b>Isotype</b>	IgG
<b>Clonality</b>	Polyclonal
<b>Form</b>	Liquid
<b>Storage</b>	Store at 4°C short term. Aliquot and store at -20°C long term. Avoid freeze/thaw cycles.
<b>Buffer</b>	Liquid in PBS containing 50% glycerol, 0.5% BSA and 0.02% New type preservative N.
<b>Purification</b>	Affinity purification

## Immunogen

<b>Gene Name</b>	CYTL1
<b>Alternative Names</b>	CYTL1; C4orf4; Cytokine-like protein 1; Protein C17
<b>Gene ID</b>	54360.0
<b>SwissProt ID</b>	Q9NRR1.The antiserum was produced against synthesized peptide derived from human CYTL1. AA range:61-110

## Application

<b>Dilution Ratio</b>	WB 1:500-1:2000, IHC-P 1:100-1:300, ELISA 1:40000, IF-P/IF-F/ICC/IF 1:50-200
<b>Molecular Weight</b>	16kDa

## Background

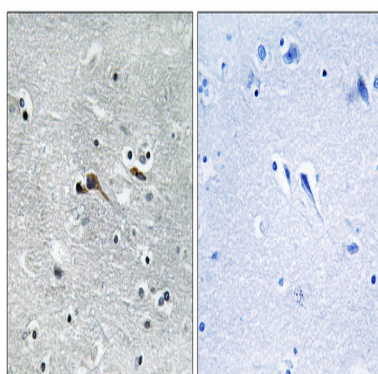
**Product Name: CYTL1 Rabbit Polyclonal Antibody**  
**Catalog #: APRab09704**



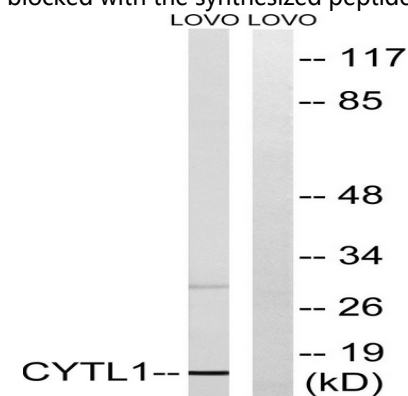
C17 is a cytokine-like protein specifically expressed in bone marrow and cord blood mononuclear cells that bear the CD34 (MIM 142230) surface marker (Liu et al., 2000 [PubMed 10857752]).[supplied by OMIM, Mar 2008],tissue specificity:Specifically expressed in CD34+ hematopoietic cells.,

## Research Area

## Image Data

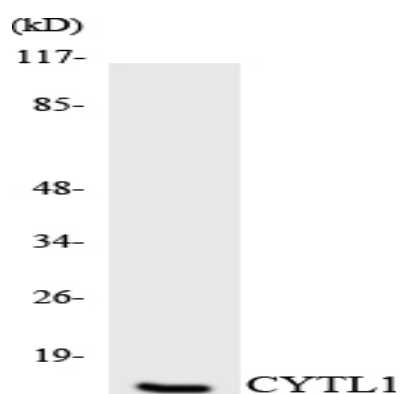


Immunohistochemistry analysis of paraffin-embedded human brain tissue, using CYTL1 Antibody. The picture on the right is blocked with the synthesized peptide.



Western blot analysis of lysates from LOVO cells, using CYTL1 Antibody. The lane on the right is blocked with the synthesized peptide.

**Product Name: CYTL1 Rabbit Polyclonal Antibody**  
**Catalog #: APRab09704**



Western blot analysis of the lysates from HT-29 cells using CYTL1 antibody.

### **Note**

For research use only.