

Product Name: Cystatin L1 Rabbit Polyclonal Antibody
Catalog #: APRab09698



Summary

Production Name	Cystatin L1 Rabbit Polyclonal Antibody
Description	Rabbit Polyclonal Antibody
Host	Rabbit
Application	IF-P,IF-F,ICC/IF,ELISA
Reactivity	Human,Rat,Mouse

Performance

Conjugation	Unconjugated
Modification	Unmodified
Isotype	IgG
Clonality	Polyclonal
Form	Liquid
Storage	Store at 4°C short term. Aliquot and store at -20°C long term. Avoid freeze/thaw cycles.
Buffer	Liquid in PBS containing 50% glycerol, 0.5% BSA and 0.02% New type preservative N.
Purification	Affinity purification

Immunogen

Gene Name	CSTL1
Alternative Names	CSTL1; Cystatin-like 1; RCET11
Gene ID	128817.0
SwissProt ID	Q9H114. The antiserum was produced against synthesized peptide derived from human CSTL1. AA range:61-110

Application

Dilution Ratio	IF-P/IF-F/ICC/IF 1:200-1:1000, ELISA 1:40000. Not yet tested in other applications.
Molecular Weight	

Background

The cystatin superfamily encompasses proteins that contain multiple cystatin-like sequences. Some of the members are

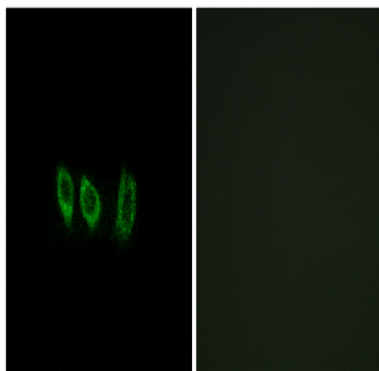
Product Name: Cystatin L1 Rabbit Polyclonal Antibody
Catalog #: APRab09698



active cysteine protease inhibitors, while others have lost or perhaps never acquired this inhibitory activity. There are three inhibitory families in the superfamily, including the type 1 cystatins (stefins), type 2 cystatins and the kininogens. The type 2 cystatin proteins are a class of cysteine proteinase inhibitors found in a variety of human fluids and secretions. The cystatin locus on chromosome 20 contains the majority of the type 2 cystatin genes and pseudogenes. This gene is located at the telomeric end of the cystatin locus and encodes a type 2 cystatin-like protein. The specific function of this protein has not been determined. [provided by RefSeq, Jul 2008],similarity:Belongs to the cystatin family.,

Research Area

Image Data



Immunofluorescence analysis of A549 cells, using CSTL1 Antibody. The picture on the right is blocked with the synthesized peptide.

Note

For research use only.