

**Product Name: CYP4Z1/2 Rabbit Polyclonal Antibody**  
**Catalog #: APRab09677**



## Summary

<b>Production Name</b>	CYP4Z1/2 Rabbit Polyclonal Antibody
<b>Description</b>	Rabbit Polyclonal Antibody
<b>Host</b>	Rabbit
<b>Application</b>	WB,IHC-P,IF-P,IF-F,ICC/IF,ELISA
<b>Reactivity</b>	Human,Rat,Mouse

## Performance

<b>Conjugation</b>	Unconjugated
<b>Modification</b>	Unmodified
<b>Isotype</b>	IgG
<b>Clonality</b>	Polyclonal
<b>Form</b>	Liquid
<b>Storage</b>	Store at 4°C short term. Aliquot and store at -20°C long term. Avoid freeze/thaw cycles.
<b>Buffer</b>	Liquid in PBS containing 50% glycerol, 0.5% BSA and 0.02% New type preservative N.
<b>Purification</b>	Affinity purification

## Immunogen

<b>Gene Name</b>	CYP4Z1/CYP4Z2P
<b>Alternative Names</b>	
<b>Gene ID</b>	199974.0
<b>SwissProt ID</b>	Q5VVE4/Q8N1L4. Synthesized peptide derived from the Internal region of human CYP4Z1/2.

## Application

<b>Dilution Ratio</b>	WB 1:500-2000, IHC-P 1:100-1:300, ELISA 1:40000, IF-P/IF-F/ICC/IF 1:50-200
<b>Molecular Weight</b>	

## Background

catalytic activity:RH + reduced flavoprotein + O(2) = ROH + oxidized flavoprotein + H(2)O.,cofactor:Heme

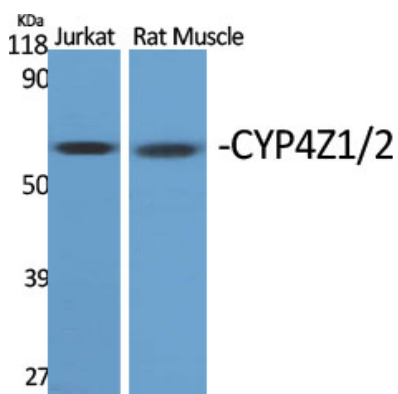
**Product Name: CYP4Z1/2 Rabbit Polyclonal Antibody**  
**Catalog #: APRab09677**



group.,similarity:Belongs to the cytochrome P450 family.,tissue specificity:Preferentially detected in breast carcinoma tissue and mammary gland, whereas only marginal expression is found in all other tested tissues.,catalytic activity:RH + reduced flavoprotein + O(2) = ROH + oxidized flavoprotein + H(2)O.,cofactor:Heme group.,similarity:Belongs to the cytochrome P450 family.,tissue specificity:Preferentially detected in breast carcinoma tissue and mammary gland, whereas only marginal expression is found in all other tested tissues.,

## Research Area

## Image Data



Western Blot analysis of various cells using CYP4Z1/2 Polyclonal Antibody

## Note

For research use only.