

Product Name: CYP4X1 Rabbit Polyclonal Antibody
Catalog #: APRab09674



Summary

Production Name	CYP4X1 Rabbit Polyclonal Antibody
Description	Rabbit Polyclonal Antibody
Host	Rabbit
Application	WB,ELISA
Reactivity	Human,Rat,Mouse

Performance

Conjugation	Unconjugated
Modification	Unmodified
Isotype	IgG
Clonality	Polyclonal
Form	Liquid
Storage	Store at 4°C short term. Aliquot and store at -20°C long term. Avoid freeze/thaw cycles.
Buffer	Liquid in PBS containing 50% glycerol, 0.5% BSA and 0.02% New type preservative N.
Purification	Affinity purification

Immunogen

Gene Name	CYP4X1
Alternative Names	CYP4X1; Cytochrome P450 4X1; CYP4X1
Gene ID	260293.0
SwissProt ID	Q8N118. The antiserum was produced against synthesized peptide derived from human Cytochrome P450 4X1. AA range:231-280

Application

Dilution Ratio	WB 1:500-1:2000, ELISA 1:10000.Not yet tested in other applications.
Molecular Weight	60kDa

Background

This gene encodes a member of the cytochrome P450 superfamily of enzymes and is located within a cluster of genes

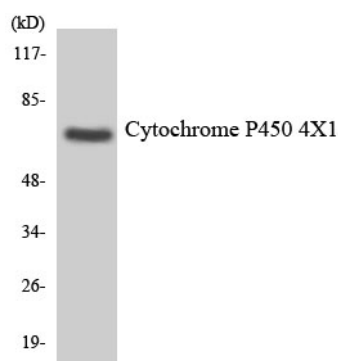
Product Name: CYP4X1 Rabbit Polyclonal Antibody
Catalog #: APRab09674



belonging to this superfamily on chromosome 1. The cytochrome P450 proteins are monooxygenases which catalyze many reactions involved in drug metabolism and synthesis of cholesterol, steroids and other lipids. The expression pattern of a similar rat protein suggests that this protein may be involved in neurovascular function in the brain. Alternative splicing results in multiple transcript variants. [provided by RefSeq, Feb 2016],catalytic activity:RH + reduced flavoprotein + O(2) = ROH + oxidized flavoprotein + H(2)O.,cofactor:Heme group.,similarity:Belongs to the cytochrome P450 family.,

Research Area

Image Data



Western blot analysis of the lysates from HeLa cells using Cytochrome P450 4X1 antibody.

Note

For research use only.