

## Summary

<b>Production Name</b>	CYP4F2 Rabbit Polyclonal Antibody
<b>Description</b>	Rabbit Polyclonal Antibody
<b>Host</b>	Rabbit
<b>Application</b>	WB,IHC-P,IF-P,IF-F,ICC/IF,ELISA
<b>Reactivity</b>	Human,Rat,Mouse

## Performance

<b>Conjugation</b>	Unconjugated
<b>Modification</b>	Unmodified
<b>Isotype</b>	IgG
<b>Clonality</b>	Polyclonal
<b>Form</b>	Liquid
<b>Storage</b>	Store at 4°C short term. Aliquot and store at -20°C long term. Avoid freeze/thaw cycles.
<b>Buffer</b>	Liquid in PBS containing 50% glycerol, 0.5% BSA and 0.02% New type preservative N.
<b>Purification</b>	Affinity purification

## Immunogen

<b>Gene Name</b>	CYP4F2
<b>Alternative Names</b>	CYP4F2; Leukotriene-B(4) omega-hydroxylase 1; CYP11B2; Cytochrome P450 4F2; Cytochrome P450-LTB-omega; Leukotriene-B(4) 20-monooxygenase 1
<b>Gene ID</b>	8529.0
<b>SwissProt ID</b>	P78329.The antiserum was produced against synthesized peptide derived from human CYP4F2. AA range:41-90

## Application

<b>Dilution Ratio</b>	WB 1:500-1:2000, IHC-P 1:100-1:300, ELISA 1:40000, IF-P/IF-F/ICC/IF 1:50-200
<b>Molecular Weight</b>	60kDa

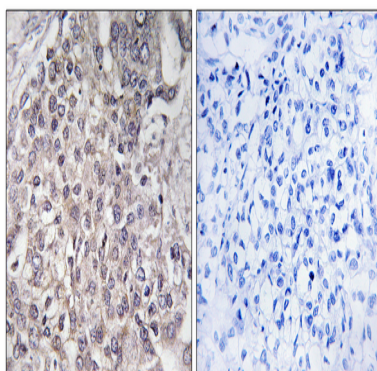
## Background

This gene encodes a member of the cytochrome P450 superfamily of enzymes. The cytochrome P450 proteins are monooxygenases which catalyze many reactions involved in drug metabolism and synthesis of cholesterol, steroids and other lipids. This protein localizes to the endoplasmic reticulum. The enzyme starts the process of inactivating and degrading leukotriene B<sub>4</sub>, a potent mediator of inflammation. This gene is part of a cluster of cytochrome P450 genes on chromosome 19. Another member of this family, CYP4F11, is approximately 16 kb away. [provided by RefSeq, Jul 2008], catalytic activity: (6Z,8E,10E,14Z)-(5S,12R)-5,12-dihydroxyicosa-6,8,10,14-tetraenoate + NADPH + O(2) = (6Z,8E,10E,14Z)-(5S,12R)-5,12,20-trihydroxyicosa-6,8,10,14-tetraenoate + NADP(+) + H(2)O., cofactor: Heme group., function: Cytochromes P450 are a group of heme-thiolate monooxygenases. In liver microsomes, this enzyme is involved in an NADPH-dependent electron transport pathway. It oxidizes a variety of structurally unrelated compounds, including steroids, fatty acids, and xenobiotics., similarity: Belongs to the cytochrome P450 family., tissue specificity: Liver.,

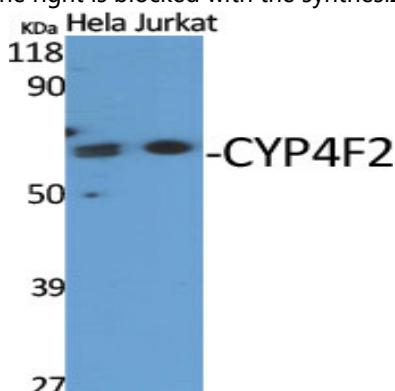
## Research Area

Arachidonic acid metabolism;

## Image Data



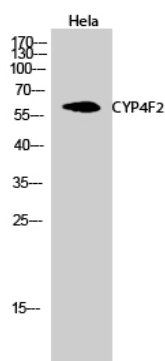
Immunohistochemistry analysis of paraffin-embedded human liver carcinoma, using Cytochrome P450 4F2 Antibody. The picture on the right is blocked with the synthesized peptide.



Western Blot analysis of various cells using CYP4F2 Polyclonal Antibody

**Product Name: CYP4F2 Rabbit Polyclonal Antibody**  
**Catalog #: APRab09672**

---



Western Blot analysis of HeLa cells using CYP4F2 Polyclonal Antibody

### **Note**

For research use only.