

Product Name: CYP2A6V2 Rabbit Polyclonal Antibody
Catalog #: APRab09648



Summary

Production Name	CYP2A6V2 Rabbit Polyclonal Antibody
Description	Rabbit Polyclonal Antibody
Host	Rabbit
Application	WB,IHC-P,IF-P,IF-F,ICC/IF,ELISA
Reactivity	Human,Rat,Mouse

Performance

Conjugation	Unconjugated
Modification	Unmodified
Isotype	IgG
Clonality	Polyclonal
Form	Liquid
Storage	Store at 4°C short term. Aliquot and store at -20°C long term. Avoid freeze/thaw cycles.
Buffer	Liquid in PBS containing 50% glycerol, 0.5% BSA and 0.02% New type preservative N.
Purification	Affinity purification

Immunogen

Gene Name	CYP2A6V2
Alternative Names	
Gene ID	1548.0
SwissProt ID	Q13120. Synthesized peptide derived from the Internal region of human CYP2A6V2.

Application

Dilution Ratio	WB 1:500-1:2000, IHC-P 1:100-1:300, ELISA 1:20000, IF-P/IF-F/ICC/IF 1:50-200
Molecular Weight	56kDa

Background

This gene, CYP2A6, encodes a member of the cytochrome P450 superfamily of enzymes. The cytochrome P450 proteins are monooxygenases which catalyze many reactions involved in drug metabolism and synthesis of cholesterol, steroids and

Product Name: CYP2A6V2 Rabbit Polyclonal Antibody
Catalog #: APRab09648

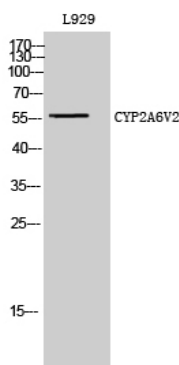


other lipids. This protein localizes to the endoplasmic reticulum and its expression is induced by phenobarbital. The enzyme is known to hydroxylate coumarin, and also metabolizes nicotine, aflatoxin B1, nitrosamines, and some pharmaceuticals. Individuals with certain allelic variants are said to have a poor metabolizer phenotype, meaning they do not efficiently metabolize coumarin or nicotine. This gene is part of a large cluster of cytochrome P450 genes from the CYP2A, CYP2B and CYP2F subfamilies on chromosome 19q. The gene was formerly referred to as CYP2A3; however, it has been renamed CYP2A6. oxidation reduction,

Research Area

Caffeine metabolism;Retinol metabolism;Drug metabolism;Drug metabolism;

Image Data



Western Blot analysis of L929 cells using CYP2A6V2 Polyclonal Antibody diluted at 1 : 2000

Note

For research use only.