

Summary

Production Name	CYP2A13 Rabbit Polyclonal Antibody
Description	Rabbit Polyclonal Antibody
Host	Rabbit
Application	WB,IHC-P,IF-P,IF-F,ICC/IF,ELISA
Reactivity	Human,Rat,Mouse

Performance

Conjugation	Unconjugated
Modification	Unmodified
Isotype	IgG
Clonality	Polyclonal
Form	Liquid
Storage	Store at 4°C short term. Aliquot and store at -20°C long term. Avoid freeze/thaw cycles.
Buffer	Liquid in PBS containing 50% glycerol, 0.5% BSA and 0.02% New type preservative N.
Purification	Affinity purification

Immunogen

Gene Name	CYP2A13
Alternative Names	CYP2A13; Cytochrome P450 2A13; CYP11A13
Gene ID	1553.0
SwissProt ID	Q16696.The antiserum was produced against synthesized peptide derived from human Cytochrome P450 2A13. AA range:311-360

Application

Dilution Ratio	WB 1:500-1:2000, IHC-P 1:100-1:300, IF-P/IF-F/ICC/IF 1:200-1:1000, ELISA 1:20000.Not yet tested in other applications.
Molecular Weight	56kDa

Product Name: CYP2A13 Rabbit Polyclonal Antibody
Catalog #: APRab09644



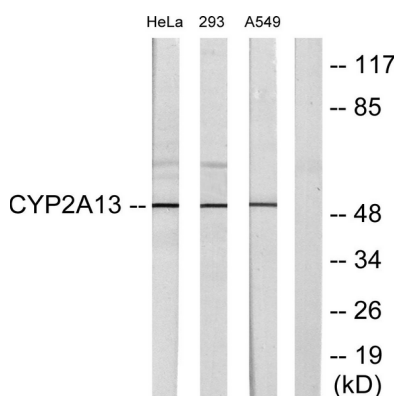
Background

cytochrome P450 family 2 subfamily A member 13(CYP2A13) Homo sapiens This gene encodes a member of the cytochrome P450 superfamily of enzymes. The cytochrome P450 proteins are monooxygenases which catalyze many reactions involved in drug metabolism and synthesis of cholesterol, steroids and other lipids. This protein localizes to the endoplasmic reticulum. Although its endogenous substrate has not been determined, it is known to metabolize 4-(methylnitrosamino)-1-(3-pyridyl)-1-butanone, a major nitrosamine specific to tobacco. This gene is part of a large cluster of cytochrome P450 genes from the CYP2A, CYP2B and CYP2F subfamilies on chromosome 19q. [provided by RefSeq, Jul 2008],catalytic activity:RH + reduced flavoprotein + O(2) = ROH + oxidized flavoprotein + H(2)O.,cofactor:Heme group.,function:Exhibits a coumarin 7-hydroxylase activity. Active in the metabolic activation of hexamethylphosphoramide, N,N-dimethylaniline, 2'-methoxyacetophenone, N-nitrosomethylphenylamine, and the tobacco-specific carcinogen, 4-(methylnitrosamino)-1-(3-pyridyl)-1-butanone.,online information:CYP2A13 alleles,polymorphism:The frequencies of the Cys-257 allele in white, black, Hispanic, and Asian individuals are 1.9%, 14.4%, 5.8%, and 7.7%, respectively. The Cys-257 variant is 37 to 56% less active than the wild-type Arg-257 protein toward all substrates tested.,similarity:Belongs to the cytochrome P450 family.,tissue specificity:Expressed in liver and a number of extrahepatic tissues, including nasal mucosa, lung, trachea, brain, mammary gland, prostate, testis, and uterus, but not in heart, kidney, bone marrow, colon, small intestine, spleen, stomach, thymus, or skeletal muscle.,

Research Area

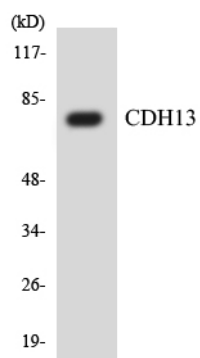
Caffeine metabolism;Retinol metabolism;Drug metabolism;Drug metabolism;

Image Data

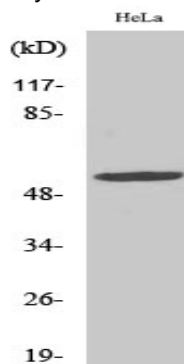


Western blot analysis of lysates from HeLa, 293, and A549 cells, using Cytochrome P450 2A13 Antibody. The lane on the right is blocked with the synthesized peptide.

Product Name: CYP2A13 Rabbit Polyclonal Antibody
Catalog #: APRab09644



Western blot analysis of the lysates from HT-29 cells using CDH13 antibody.



Western Blot analysis of various cells using CYP2A13 Polyclonal Antibody diluted at 1: 2000

Note

For research use only.