

Summary

Production Name	Cyclin F Rabbit Polyclonal Antibody
Description	Rabbit Polyclonal Antibody
Host	Rabbit
Application	WB,IHC-P,IF-P,IF-F,ICC/IF,ELISA
Reactivity	Human,Rat,Mouse

Performance

Conjugation	Unconjugated
Modification	Unmodified
Isotype	IgG
Clonality	Polyclonal
Form	Liquid
Storage	Store at 4°C short term. Aliquot and store at -20°C long term. Avoid freeze/thaw cycles.
Buffer	Liquid in PBS containing 50% glycerol, 0.5% BSA and 0.02% New type preservative N.
Purification	Affinity purification

Immunogen

Gene Name	CCNF
Alternative Names	CCNF; FBX1; FBXO1; Cyclin-F; F-box only protein 1
Gene ID	899.0
SwissProt ID	P41002.The antiserum was produced against synthesized peptide derived from human Cyclin F. AA range:737-786

Application

Dilution Ratio	WB 1:500-1:2000, IHC-P 1:100-1:300, ELISA 1:10000, IF-P/IF-F/ICC/IF 1:50-200
Molecular Weight	88kDa

Background

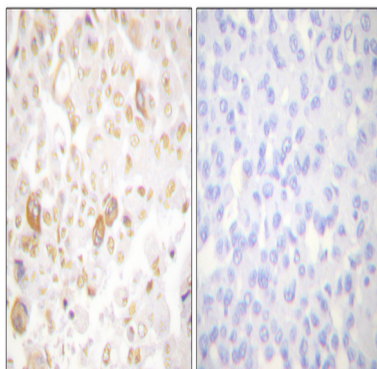
Product Name: Cyclin F Rabbit Polyclonal Antibody
Catalog #: APRab09599



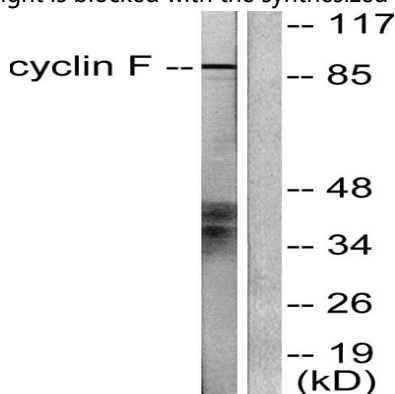
This gene encodes a member of the cyclin family. Cyclins are important regulators of cell cycle transitions through their ability to bind and activate cyclin-dependent protein kinases. This member also belongs to the F-box protein family which is characterized by an approximately 40 amino acid motif, the F-box. The F-box proteins constitute one of the four subunits of the ubiquitin protein ligase complex called SCFs (SKP1-cullin-F-box), which function in phosphorylation-dependent ubiquitination. The F-box proteins are divided into 3 classes: Fbws containing WD-40 domains, Fbls containing leucine-rich repeats, and Fbxs containing either different protein-protein interaction modules or no recognizable motifs. The protein encoded by this gene belongs to the Fbxs class and it was one of the first proteins in which the F-box motif was identified. [provided by RefSeq, Jul 2008],developmental stage:G2/M cyclins accumulate steadily during G2 and are abruptly destroyed at mitosis.,function:Likely to be involved in the control of the cell cycle during S phase and G2.,similarity:Belongs to the cyclin family.,similarity:Belongs to the cyclin family. Cyclin AB subfamily.,similarity:Contains 1 F-box domain.,

Research Area

Image Data

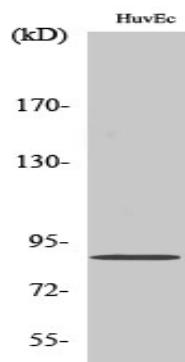


Immunohistochemistry analysis of paraffin-embedded human breast carcinoma tissue, using Cyclin F Antibody. The picture on the right is blocked with the synthesized peptide.



Western blot analysis of lysates from HeLa cells, using Cyclin F Antibody. The lane on the right is blocked with the synthesized peptide.

Product Name: Cyclin F Rabbit Polyclonal Antibody
Catalog #: APRab09599



Western Blot analysis of various cells using Cyclin F Polyclonal Antibody diluted at 1: 500 cells nucleus extracted by Minute
TM Cytoplasmic and Nuclear Fractionation kit (SC-003, Invent biotech, MN, USA) .

Note

For research use only.